



Maintenance Library

4234

**Printer
Parts Catalog**

Preface

This Parts Catalog (PC) contains listing and illustrations of all replaceable assemblies, subassemblies and detail parts released to

Production Control on or before November, 1986 for the IBM 4234 Printer.

Third Edition (November 1986)

This manual obsoletes SC31-3015-0, SC31-3015-1

Information contained in this manual is subject to change from time to time. Any such change will be reported in subsequent revisions or Technical Newsletters.

IBM has prepared this maintenance manual for the use of IBM customer engineers in the installation, maintenance, or repair of the specific machines indicated. IBM makes no representations that it is suitable for any other purpose.

The drawings and specifications contained herein shall not be reproduced in whole or in part without written permission.

References in this publication to IBM products, programs, or services do not imply that IBM intends to make these available in all countries in which IBM operates. Any reference to an IBM's program product in this publication is not intended to state or imply that only IBM's program product may be used. Any functionally equivalent program may be used instead.

Publications are not stocked at the address given below. Requests for IBM publications should be made to your IBM representative or to the IBM branch office serving your locality.

A form for reader's comments is provided at the back of this publication. If the form has been removed, comments may be addressed to IBM Corporation, Information Development, Department 78C, 1001 W.T. Harris Boulevard West, Charlotte, NC, 28257, USA. IBM may use or distribute whatever information you supply in any way it believes appropriate without incurring any obligation to you.

HOW TO USE THIS PARTS CATALOG

HOW TO FIND PART INFORMATION:

WHEN ASSEMBLY
LOCATION IS KNOWN

PERFORM STEPS

1, 3 AND 4

WHEN ASSEMBLY
NAME IS KNOWN

PERFORM STEPS

2, 3 AND 4

WHEN PART NUMBER
IS KNOWN

PERFORM STEPS

5, 6 AND 7

1
TURN TO THE VISUAL
INDEX - THEN LOCATE, BY
ILLUSTRATION, THE ASSEMBLY
CONTAINING THE PART.

2
TURN TO THE CONTENTS
PAGE - THEN LOCATE,
BY NAME, THE ASSEMBLY
CONTAINING THE PART.

3
TURN TO THE PAGE FOR
THAT ASSEMBLY - THEN
LOCATE THE PART VISUALLY.

4
USING THE INDEX NUMBER
SHOWN WITH THE PART,
REFER TO THE ACCOMPANY-
ING LISTING TO OBTAIN
THE PART NUMBER, DEScrip-
TION AND QUANTITY.

5
TURN TO THE NUMERICAL
INDEX - THEN NOTE THE
FIGURE AND INDEX NUMBER
GIVEN FOR THAT PART
NUMBER.

6
TURN TO THE FIGURE NUMBER
GIVEN - THEN FIND THE INDEX
NUMBER ON THE ILLUSTRATION.

7
FIND THE CORRESPONDING
INDEX NUMBER IN THE
ACCOMPANYING LISTING
TO OBTAIN THE DESCRIPTION
AND QUANTITY OF THE PART.

NOTE:

IF THE DESIRED ITEM IS PART OF A SUBASSEMBLY NOT BROKEN DOWN WITHIN THAT FIGURE, REFER TO THE FIGURE ASSIGNED TO THE SUB-ASSEMBLY, LOCATE THE PART VISUALLY AND OBTAIN THE PART NUMBER, DESCRIPTION AND QUANTITY FROM THE ACCOMPANYING LISTING.

GLOSSARY

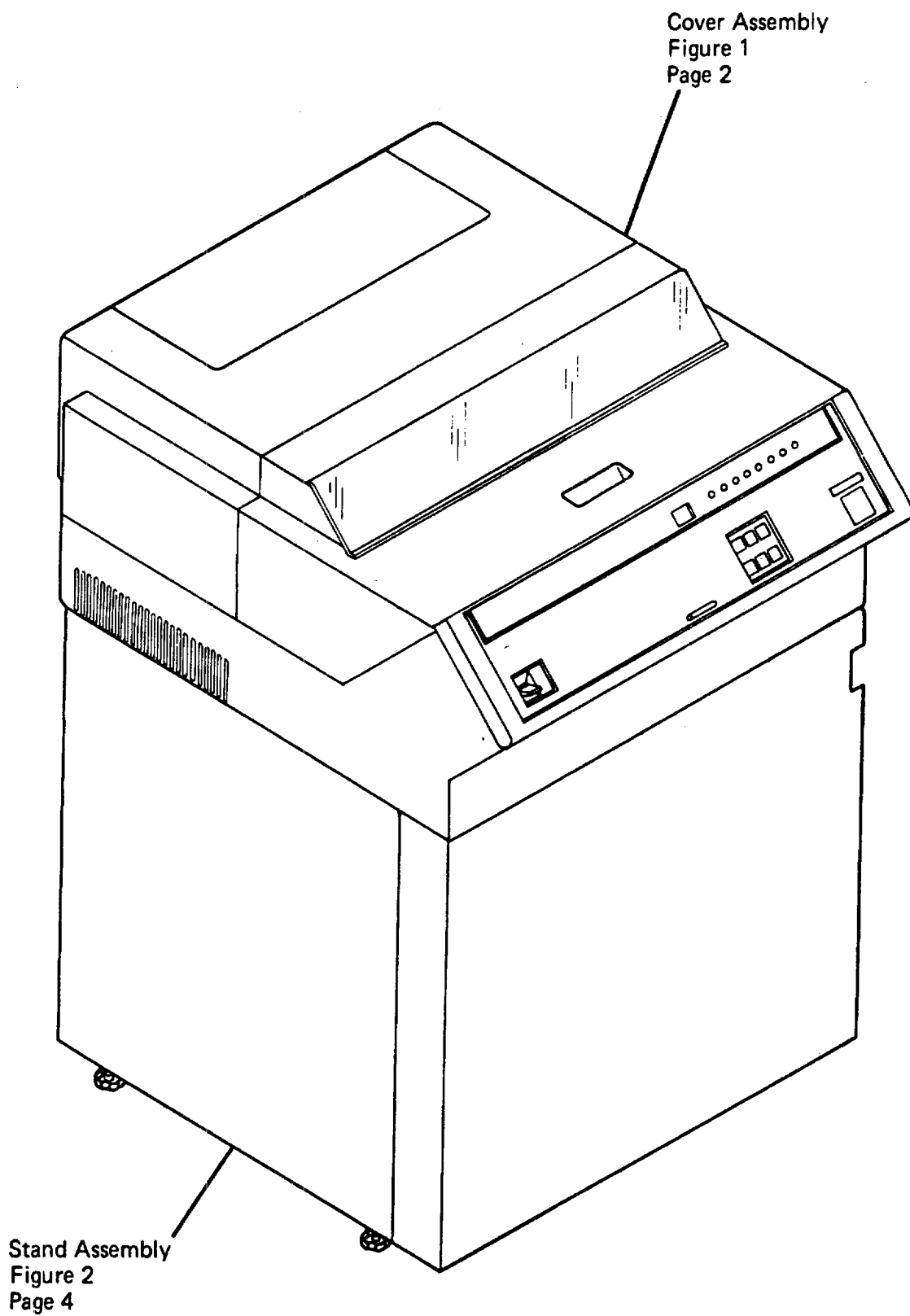
- ① NO P/N - When this notation appears in the Part No. column, it denotes a part or group of parts that have not been assigned a part number or which are not recommended for field replacement.
- ② NR - This notation in the Part No. column denotes a part not recommended for field replacement.
- ③ NP - This notation in the Part No. or Description column indicates parts that are non-procurable. In these cases the next higher assembly should be ordered.
- ④ AR - The notation AR in the Units Per Asm. column indicates that the quantity of the part is used as required.
- ⑤ REF - The notation REF in the Units Per Asm. column indicates that the listing of the assembly is repeated and reference should be made to its previous listing for the quantity required.
- ⑥ SIMILAR ASSEMBLIES - If two or more assemblies contain a majority of identical parts, they are combined in the same listing. Parts common to assemblies are illustrated and listed by one index number. Parts peculiar to one or the other of the assemblies are listed separately and identified either in the description of the part, or by a descriptive trailer line.
- ⑦ INDENTURE - The indentation of items under the numerals 1 through 4 at the head of the Description column shows the relationship between assemblies, subassemblies and detail parts. For example:
- | | | | | |
|-------------|---------------|----------------------------------|---|---|
| | 1 | 2 | 3 | 4 |
| (No dot) | MAIN ASSEMBLY | | | |
| (One dot) | • | Detail parts of main assembly | | |
| (One dot) | • | Assembly within main assembly | | |
| (Two dot) | • • | Detail part of one dot assembly | | |
| (Two dot) | • • | Assembly within one dot assembly | | |
| (Three dot) | • • • | Detail parts of two dot assembly | | |

FIGURE INDEX NUMBER	PART NUMBER	UNITS PER ASM.	DESCRIPTION
			1 2 3 4
22 -	No. P/N	REF	TRANSPORT AND VACUUM ASSEMBLY
①	⑥	⑤	⑦ THIS ASSEMBLY CANNOT BE ORDERED FOR REPLACEMENT, SEE LIST 2-252 FOR NEXT HIGHER ASM
- 1	1846187	1	• DOOR ASSEMBLY, VACUUM COLUMN - MODS 6, 8
- 1	1846188	1	• DOOR ASSEMBLY, VACUUM COLUMN - MOD 4
- 2	55918	5	FOR DETAIL BREAKDOWN, SEE FIGURE 23A
- 3	45690	5	• SCREW, MACH BD HD — 10-32 X 0.625 LG
- 4	2512946	AR	• WASHER, FL — 0.203 ID X 0.408 OD
- 4	2512948	AR	• SHIM, DOOR VAC COLUMN 0.015 THK
- 5	1846100	AR	• SHIM, DOOR VAC COLUMN 0.030 THK
- 9	2523727	1	• PNEUMATIC HOSES TRANSPORT ASSEMBLY
- 10	1767707	1	FOR DETAIL BREAKDOWN, SEE FIGURE 24
- 11	322562	3	• DISC, DECORATIVE
- 12	1767705	1	• COVER
- 13	1766920	1	• SCREW, BD HD — 10-32 X 2.000 INCHES LG
- 14	1767720	1	• CAM
- 15	356742	3	• SPRING, COMP 1.190 OD X 2.750 LG
- 16	5489002	3	• HUB ASM
- 17	1090873	6	• • CLAMP, 0.375 ID X 0.173 MTG HOLE
- 18	1767703	3	• • SCREW, MACH BD HD — 6-32 X 0.250 LG
- 19	1767711	3	• • LOCKWASHER, SPLIT — 0.168 ID X 0.296 OD
			• • ROLLER, TRIPLE
			• • ROLLER, SINGLE

Contents

Master Visual Index	vi
Visual Index	vii
Cover Assembly	2
Stand Assembly	4
Printer Assembly	6
Transport Assembly	14
Intermediate Printer Mechanism (IPM)	18
Casting Assembly	20
Cable Assemblies and Component Parts	27
Numerical Index	X-1

MASTER VISUAL INDEX



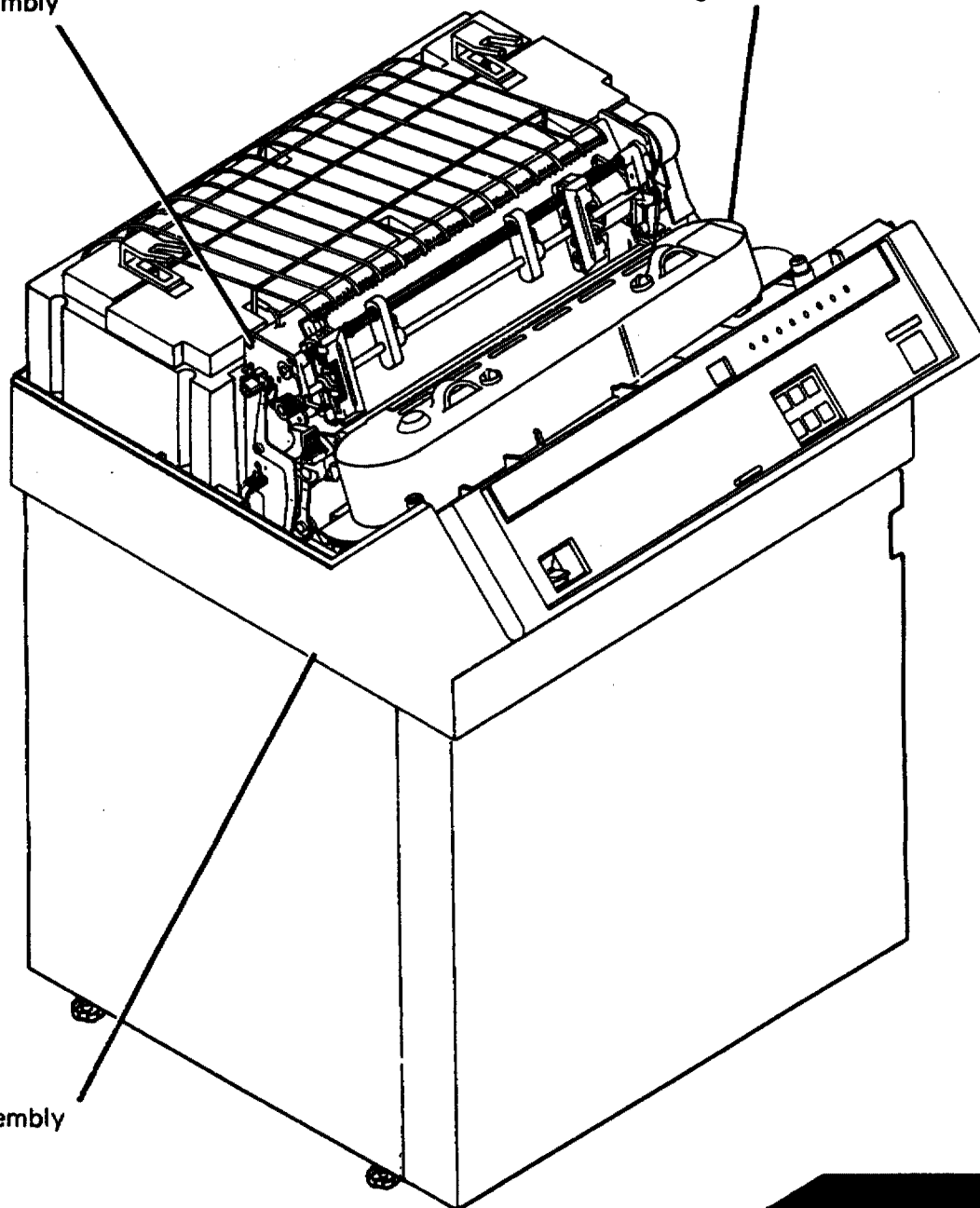
VISUAL INDEX

Transport Assembly
Figure 4
Page 14 - 16

Intermediate Printer Assembly
Figure 5
Page 18

Casting Assembly
Figure 6
Page 20 - 22

Printer Assembly
Figure 3
Page 6 - 12



Cable Assemblies and
Component Parts
Figure 7
Page 27 - 33

This page intentionally left blank.

CATALOG SECTION

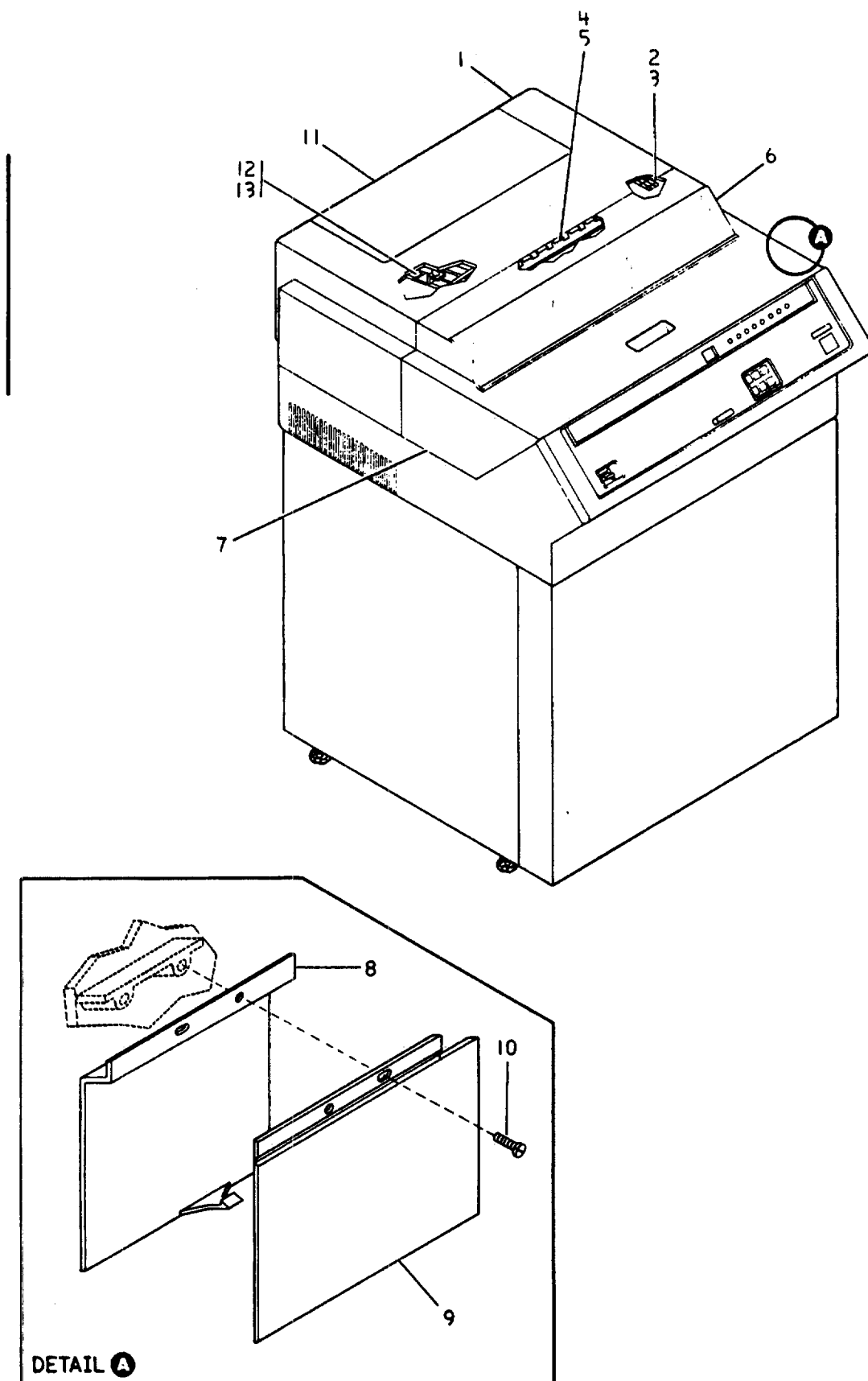


FIGURE INDEX	PART NUMBER	UNITS	DESCRIPTION
1-0	70X0337	1	COVER ASSEMBLY-TOP FOR ILLUSTRATION SEE FIGURE 1
-1	62X1697	1	.COVER ASSEMBLY-TOP REAR
-2	1794555	4	.HINGE
-3	1621852	16	.SCREW
-4	62X1749	1	.PLATE
-5	1622860	2	.SCREW
-6	62X1775	1	.COVER-WINDOW
-7	6350889	1	.COVER ASSEMBLY-TOP FRONT
-8	6213149	1	.HOLDER
-9	6213148	1	.COVER
-10	1621852	2	.SCREW
-11	6213101	1	.COVER ASSEMBLY-BUSTLE
-13	1622860	2	.SCREW

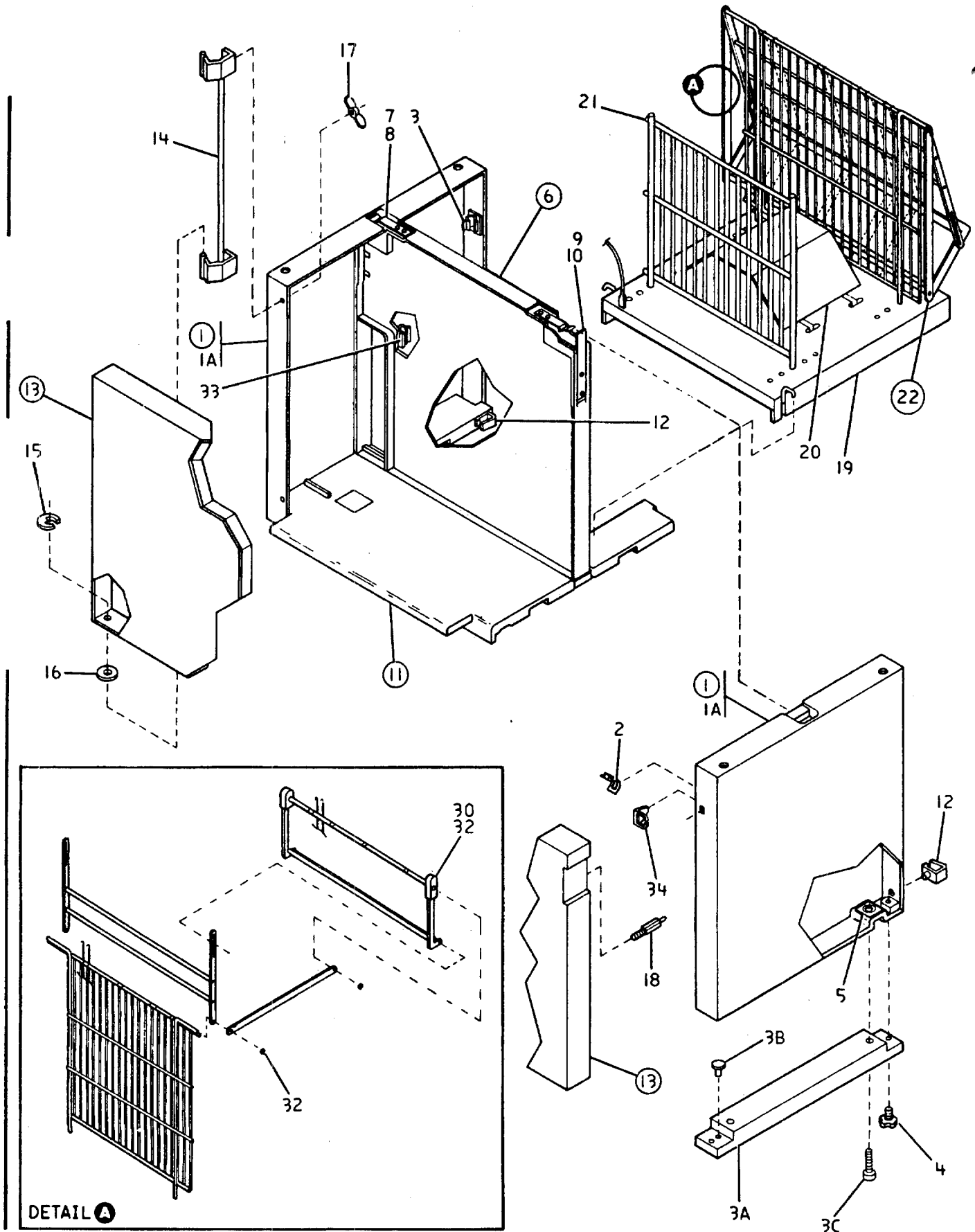


FIGURE INDEX	PART NUMBER	UNITS	DESCRIPTION
2-0	No PN	1	STAND ASSEMBLY FOR ILLUSTRATION SEE FIGURE 2
-1	70X0324	1	.STAND ASSEMBLY / SIDE (2) (WTC ONLY)
-1	70X0325	1	.STAND ASSEMBLY / SIDE (2)
-1A	8665474	2	..SIDE PANEL
-2	8665556	2	..RECEIVER-STUD USED ON ONE SIDE PANEL ONLY
-3	2513269	2	..CABLE CLAMP
-3A	62X1734	2	..FOOT EXTENDER (WTC ONLY)-(NEW STYLE/ PLASTIC) IF REPLACING OLD STYLE ALUMINUM EXTENDER FOOT ORDER 2 NEW STYLE AND REPLACE BOTH.
-3B	62X1754	4	..CLIP (WTC ONLY)
-3C	1621236	4	..SCREW (WTC ONLY)
-4	6213091	4	..FOOT ASSEMBLY
-5	62X1684	2	..LABEL-VISUAL WARNING
-6	6275567	1	.CENTER PANEL ASSEMBLY
-7	8665508	2	..SPRING-FORMED
-8	1622855	4	..SCREW
-9	6213092	2	..SPRING-LEAF
-10	1622855	4	..SCREW
-11	56X7348	1	.FLOOR PANEL ASSEMBLY
-12	6213073	2	..CABLE CLAMP
-13	8665480	1	.DOOR ASSEMBLY-FRONT
-14	8665555	1	..HINGE
-15	1126831	1	..RETAINING RING
-16	1622306	1	..WASHER
-17	1622454	2	..WING NUT
-18	8665554	1	..STUD-FASTENER
-19	62X1705	1	.BRACKET-BIN
-19	62X1751	1	.BRACKET-BIN (WTC ONLY)
-20	6350922	1	.RAMP-PAPER
-21	6350936	1	.RACK-BIN
-22	6350928	1	.RACK-ASSEMBLY
-30	70X0323	2	..RUBBER BUMPER
-32	1092125	4	..RETAINING E CLIP (OLD STYLE)
-32	70X0351	4	..PUSH ON CAP (NEW STYLE)
-33	5681718	1	..CABLE CLAMP
-34	70X0322	2	..RETAINER CLIP

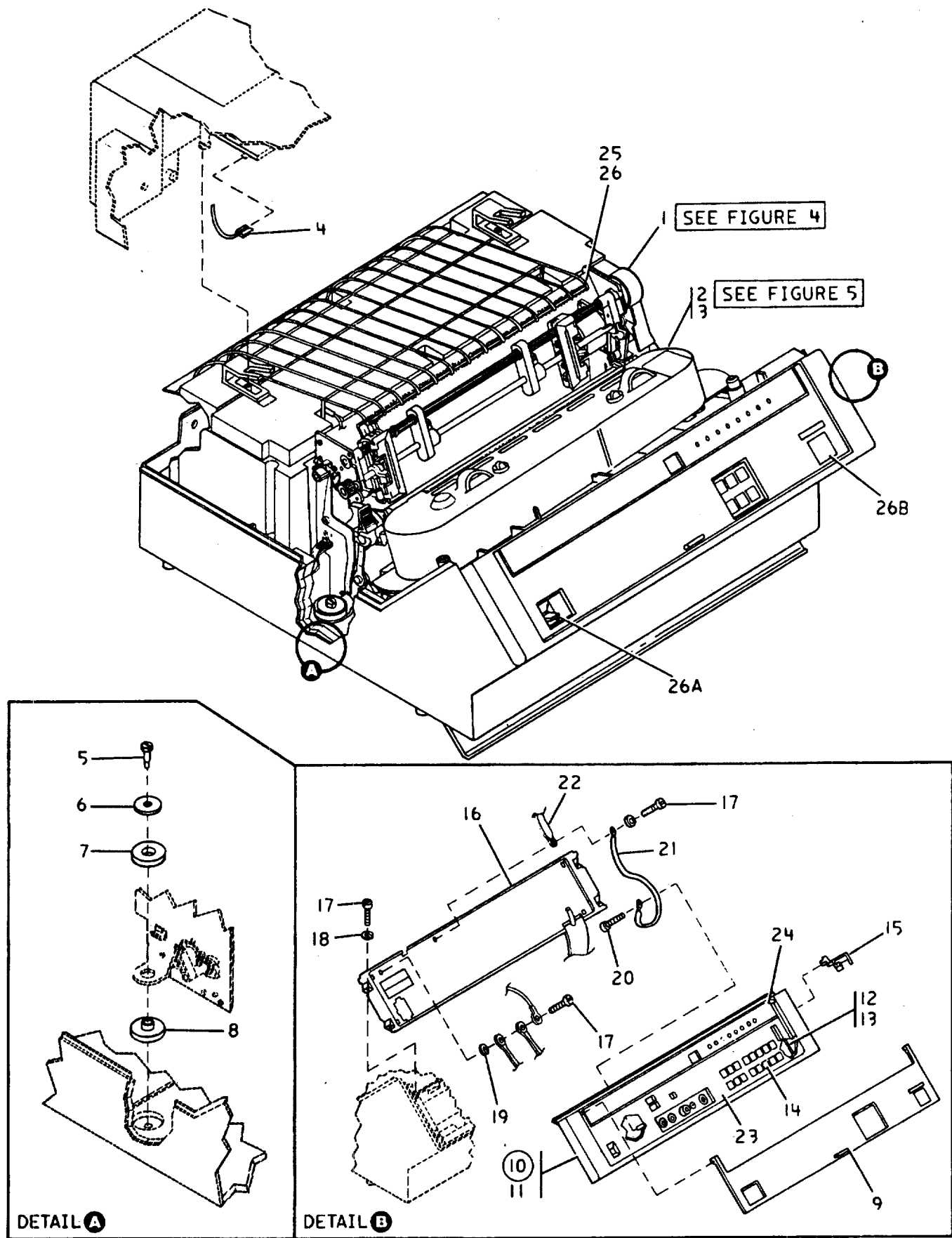


Figure 3. PRINTER ASSEMBLY (1 of 4)

FIGURE INDEX	PART NUMBER	UNITS	DESCRIPTION
3-0	No PN	1	PRINTER ASSEMBLY FOR ILLUSTRATION SEE FIGURE 3
1 -1	8665520	NR	.TRANSPORT ASSEMBLY FOR DETAIL BREAKDOWN SEE FIGURE 4
-2	No PN	1	.INTERMEDIATE PRINTER MECHANISM (IPM) FOR DETAIL BREAKDOWN SEE FIGURE 5
-3	1621191	3	.SCREW ATTACHES IPM TO TRANSPORT ASSEMBLY
-4	6350949	1	.JUMPER ASSEMBLY
-5	6341227	4	.SCREW-SHOULDER
-6	8678383	4	.WASHER
-7	1989699	4	.SHOCK MOUNT
-8	8678382	4	.SHOCK MOUNT
-9	8665460	1	.ACCESS COVER
-10	6350943	1	.MOD 1 OPERATOR PANEL ASSEMBLY
-10	6350944	1	.MOD 2 OPERATOR PANEL ASSEMBLY
-11	62X1777	1	..FACIA-MOD 1
-11	62X1776	1	..FACIA-MOD 2
-12	6126642	1	..PRINTED CIRCUIT BOARD-MOD 1
-12	6126643	1	..PRINTED CIRCUIT BOARD-MOD 2
-13	1622856	4	..SCREW
-14	6350849	16	..KEYBUTTON
-15	6213161	1	.RETAINER
-16	56X7357	1	.PLATE ASSEMBLY
-17	1621191	6	.SCREW
-18	1622318	5	.LOCKWASHER
-19	1622346	1	.LOCKWASHER
-20	1622856	1	.SCREW
-21	518611	1	.JUMPER

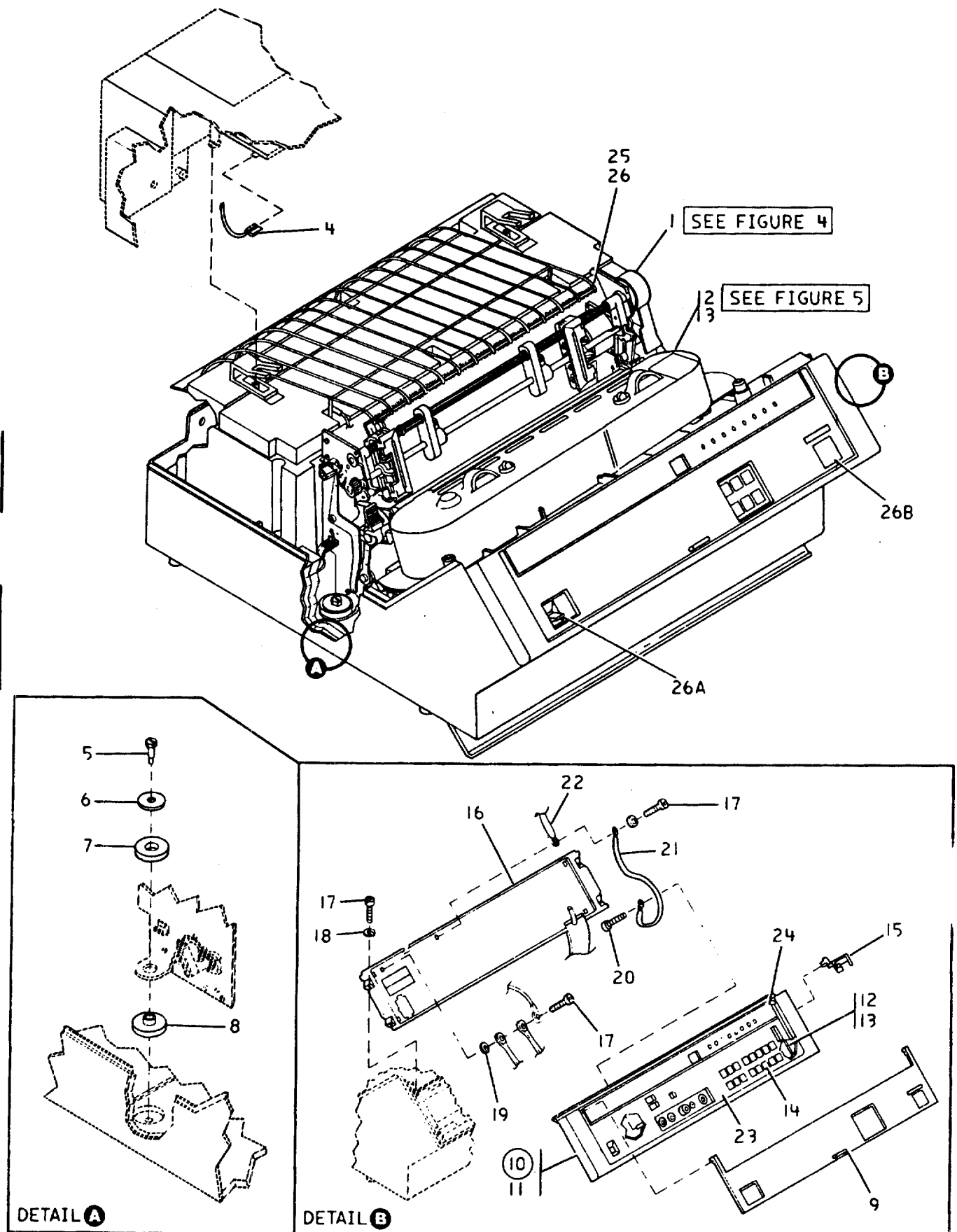


Figure 3. PRINTER ASSEMBLY (2 of 4)

FIGURE INDEX	PART NUMBER	UNITS	DESCRIPTION
3-22	6350873	1	. JUMPER
-23	No PN	1	. LOWER OVERLAY-SEE CHART
-24	No PN	1	. UPPER OVERLAY-SEE CHART
-25	843574	1	. ELIMINATOR ASSEMBLY-STATIC
-26	843576	1	. SPRING
-26A	6842984	1	. SWITCH
-26B	62X1759	1	. LOGO
-26B	6213111	1	. LOGO (WTC ONLY)

OVERLAY CHART

LANGUAGE	TYPE	UPPER	LOWER
ENGLISH	MOD 1	8665374	6350858
	MOD 2	8665372	6350859
FRENCH CANADIAN	MOD 1	62X1716	62X1717
	MOD 2	62X1718	62X1719
GERMAN	MOD 1	6078618	6275565
	MOD 2	6078636	6275564
SPANISH	MOD 1	6078620	6350862
	MOD 2	6078638	6350868
JAPANESE	MOD 1	6078615	6275562
	MOD 2	6078633	6350869
ITALIAN	MOD 1	6275610	6350865
	MOD 2	6275611	6350871
BRAZILIAN	MOD 1	6275616	6275563
	MOD 2	6275617	6350870

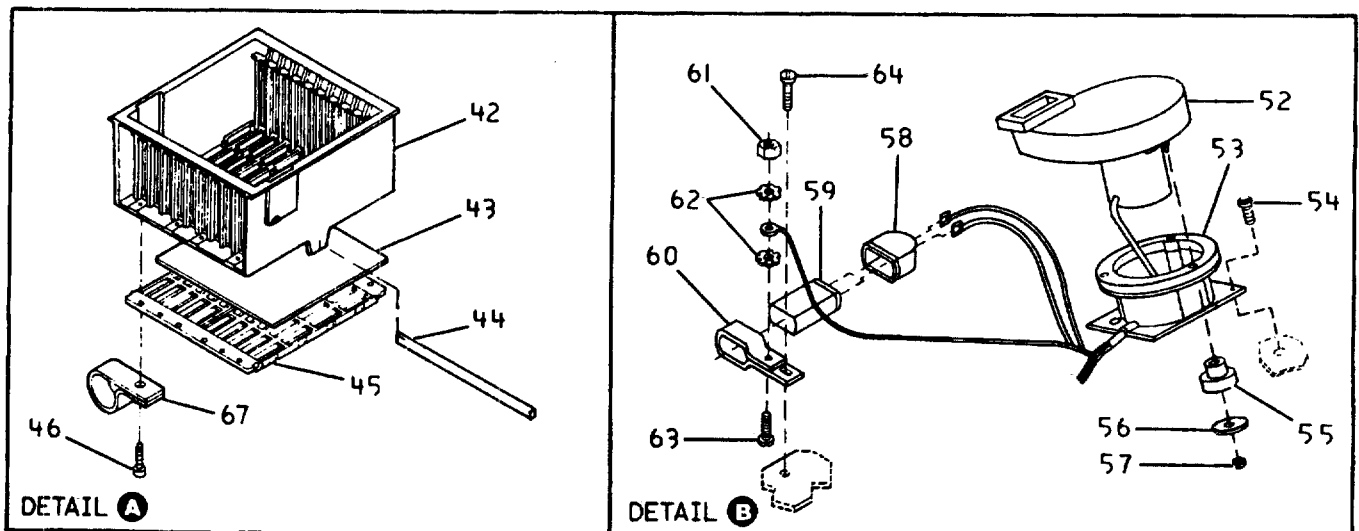
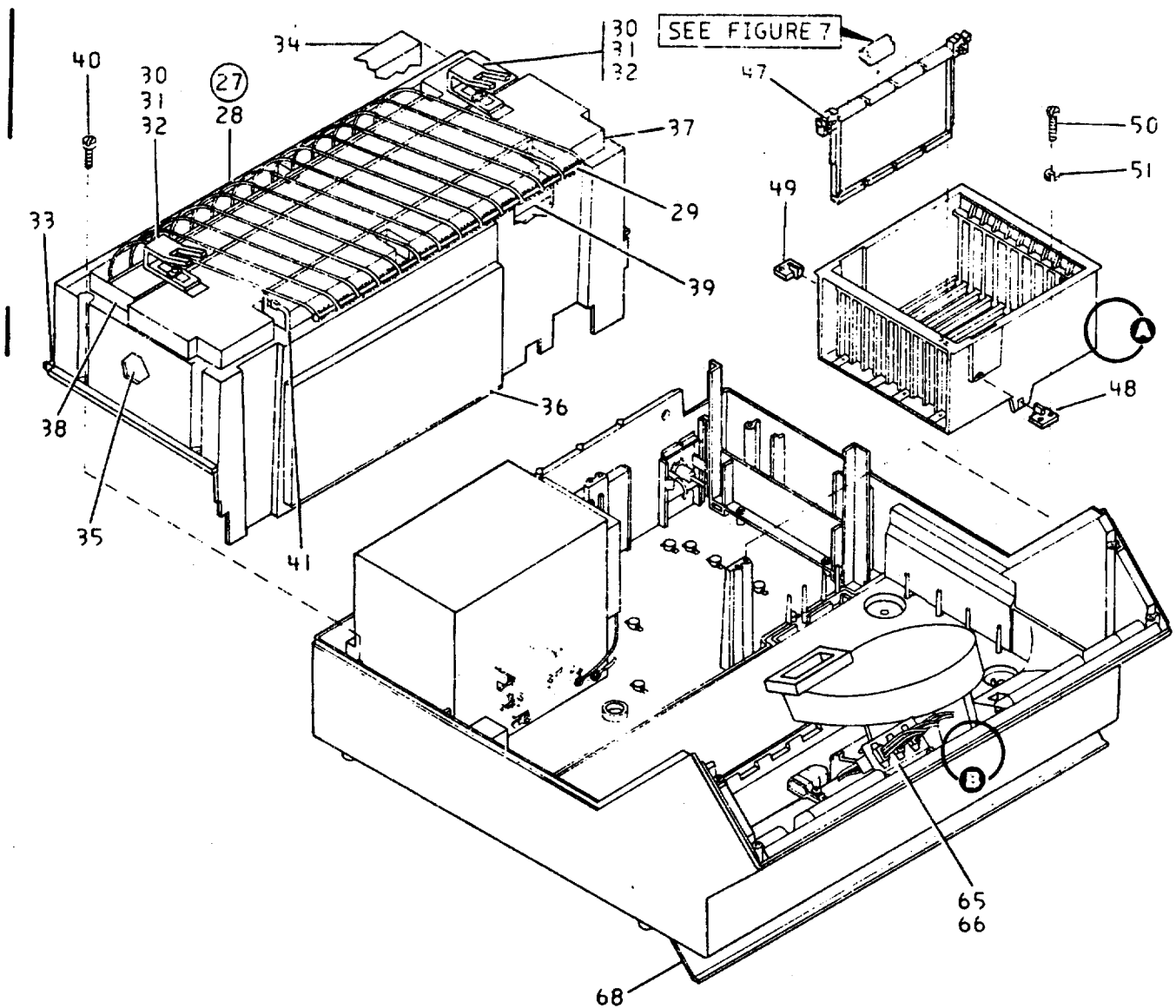


Figure 3. PRINTER ASSEMBLY (3 of 4)

FIGURE INDEX	PART NUMBER	UNITS	DESCRIPTION
I -27	70X0338	1	.COVER ASSEMBLY-POWER
-28	56X7361	1	..COVER
-29	6350846	1	..POWER WIRE GUIDE-PAPER
-30	70X0310	2	..HOLD DOWN CLIP
-31	1621231	2	..SCREW
-32	6240136	2	..HOLD DOWN WASHER
-33	6350952	1	..SEAL
-34	6240144	1	..PAD
-35	6240143	2	..PAD
-36	8665620	1	..PAD
-37	8665641	1	..PAD
-38	8665642	1	..PAD
-39	8665619	1	..PAD
-40	1621193	4	.SCREW
-41	6350949	1	.JUMPER
-42	8665399	1	.LOGIC GATE
-43	No PN	1	.P.C. BOARD
-44	8665386	1	.SUPPORT BAR
-45	8665398	2	.STIFFENER
-46	1621191	9	.SCREW
-47	1743141	AR	.CARDHOLDER-EPROM CARD
-47	1743142	AR	.CARDHOLDER-SYSTEM CARD AND MOD 2 ATTACH CARD
-47	1743143	AR	.CARDHOLDER-MOTOR DRIVER CARD AND BAND SENSOR CARD
-47	1743144	AR	.CARDHOLDER-HAMMER DRIVER CARD
-48	6350955	1	.PIVOT-FRONT (WHITE)
-49	6350956	1	.PIVOT-REAR (BLACK)
-50	1621191	4	.SCREW
-51	1622346	4	.LOCKWASHER
-52	62X1779	1	.BLOWER ASSEMBLY-110V,50/60 HZ
-52	62X1780	1	.BLOWER ASSEMBLY-220V,50/60 HZ
-53	6213118	1	.COLLAR ASSEMBLY
-54	1622860	2	.SCREW
-55	8665640	3	.ISOLATOR
-56	6213166	3	.WASHER
-57	1622401	3	.NUT
-58	363001	1	.BOOT
-59	5252806	NP	.CAPACITOR-110V,50/60 HZ
-59	5252868	NP	.CAPACITOR-220V,50/60 HZ INCLUDED IN BLOWER ASSEMBLY, INDEX NO. 52
-60	62X1748	1	.CAPACITOR CLAMP-(WTC ONLY)
-60	70X0361	1	.CAPACITOR CLAMP
-61	1622403	1	.NUT
-62	1622346	2	.LOCKWASHER
-63	1621192	1	.SCREW
-64	1622861	1	.SCREW
-65	6213162	1	.A.C. BRACKET
-66	1622860	2	.SCREW
-67	70X0326	1	.BRACKET-CABLE RETAINER
-68	6275643	1	.CHUTE-FORMS

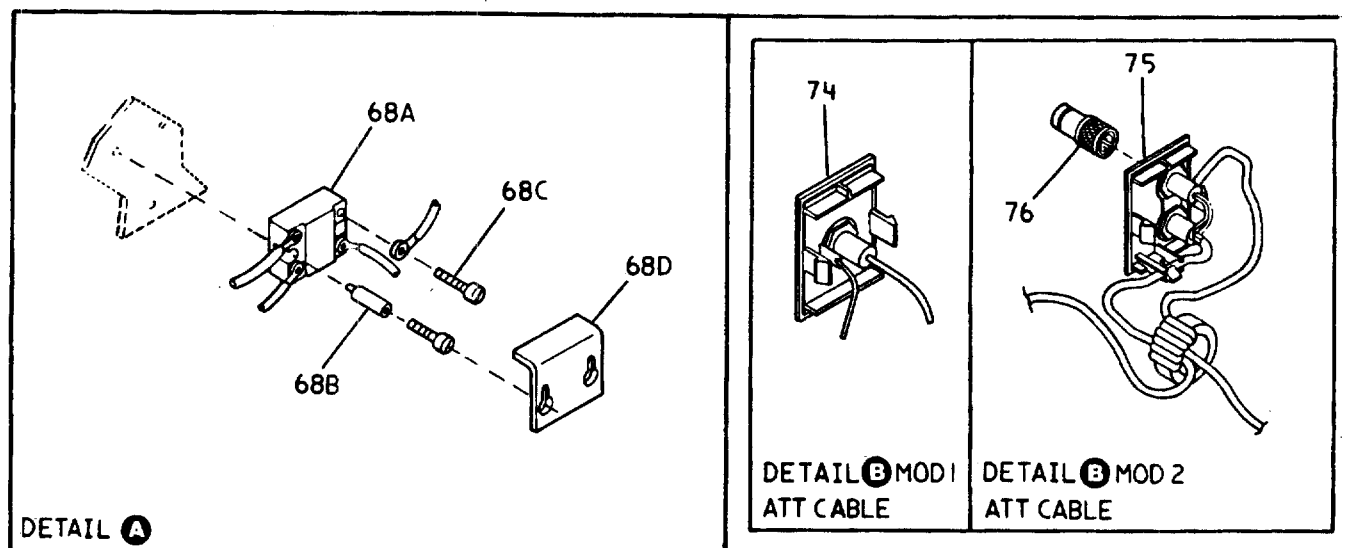
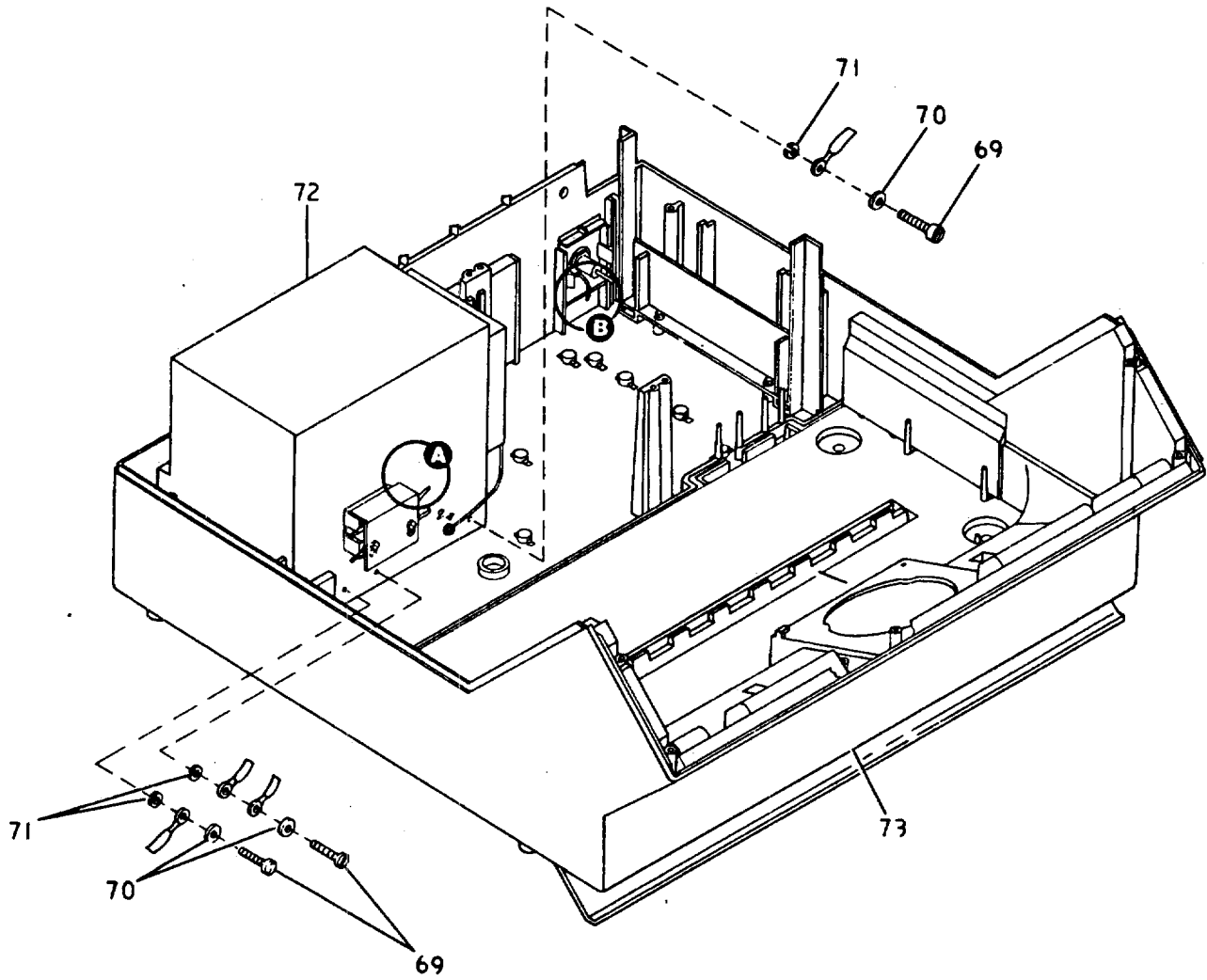


Figure 3. PRINTER ASSEMBLY (4 of 4)

FIGURE INDEX	PART NUMBER	UNITS	DESCRIPTION
3-68A	6275609	1	.RELAY
-68B	6213089	2	.POSTS
-68C	1621190	2	.SCREW
-68D	6213090	1	.COVER
-69	1621190	3	.SCREW
-70	1622304	3	.WASHER
-71	1622346	3	.LOCKWASHER
-72	6350852	1	.POWER SUPPLY ASSEMBLY-110V,50/60 HZ
-72	6350853	1	.POWER SUPPLY ASSEMBLY-220V,50/60 HZ
-73	62X1700	1	.BASE ASSEMBLY
-74	8665257	1	.MOD 1 ATT CABLE
-75	6350874	1	.MOD 2 ATT CABLE
-76	7362188	1	.TERMINATOR-MOD 2

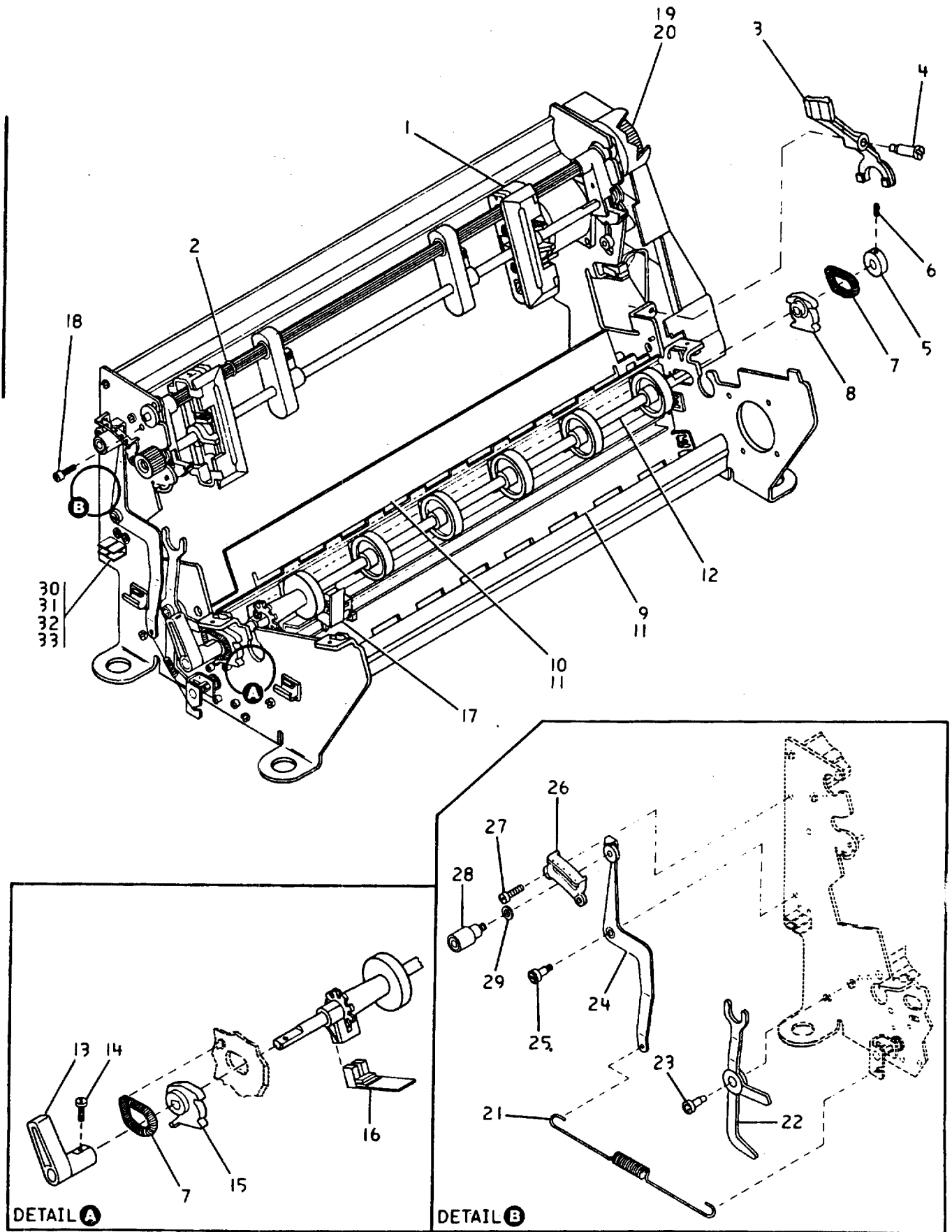


Figure 4. TRANSPORT ASSEMBLY (1 of 2)

FIGURE INDEX	PART NUMBER	UNITS	DESCRIPTION
4-0	8665520	NR	TRANSPORT ASSEMBLY FOR ILLUSTRATION SEE FIGURE 4
1 -1	70X0364	1	.TRACTOR ASSEMBLY-FINAL
-2	1126833	1	.RETAINING RING
-3	8665547	1	.LEVER
1 -4	70X0319	1	.SCREW-AUTOLOAD
-5	6240127	1	.SLEEVE
-6	6078589	1	.SET SCREW
-7	6350942	2	.SPRING
-8	6078590	1	.CAM-RIGHT
-9	70X0308	1	.GUIDE-FRONT
-10	6213057	1	.GUIDE-REAR
-11	1621492	8	..SCREW (NEED ONLY 4 PER GUIDE)
-12	6350879	1	.PRESSURE ROLL SHAFT ASSEMBLY
-13	6275521	1	.HANDLE
-14	1621191	1	.SCREW
-15	6350771	1	.CAM-LEFT
-16	8665419	1	.JAM SENSOR
-17	6350878	1	.END OF FORM SENSOR
-18	1621197	2	.SCREW
-19	8665437	1	.PULLEY-KNOB
-20	6078589	1	.SET SCREW-M4
-21	6350911	1	.SPRING
-22	6275627	1	.YOKE
-23	6275633	1	.SCREW
-24	6275628	1	.TENSION LEVER
-25	6275634	1	.SCREW
-26	6275626	1	.SCALE HOUSING
-27	1621197	2	.SCREW
-28	6275629	1	.TENSION KNOB
-29	1622306	1	.WASHER
-30	5492542	2	.TERMINAL
-31	1621171	2	.SCREW
-32	1622344	2	.LOCKWASHER
-33	1622401	2	.NUT

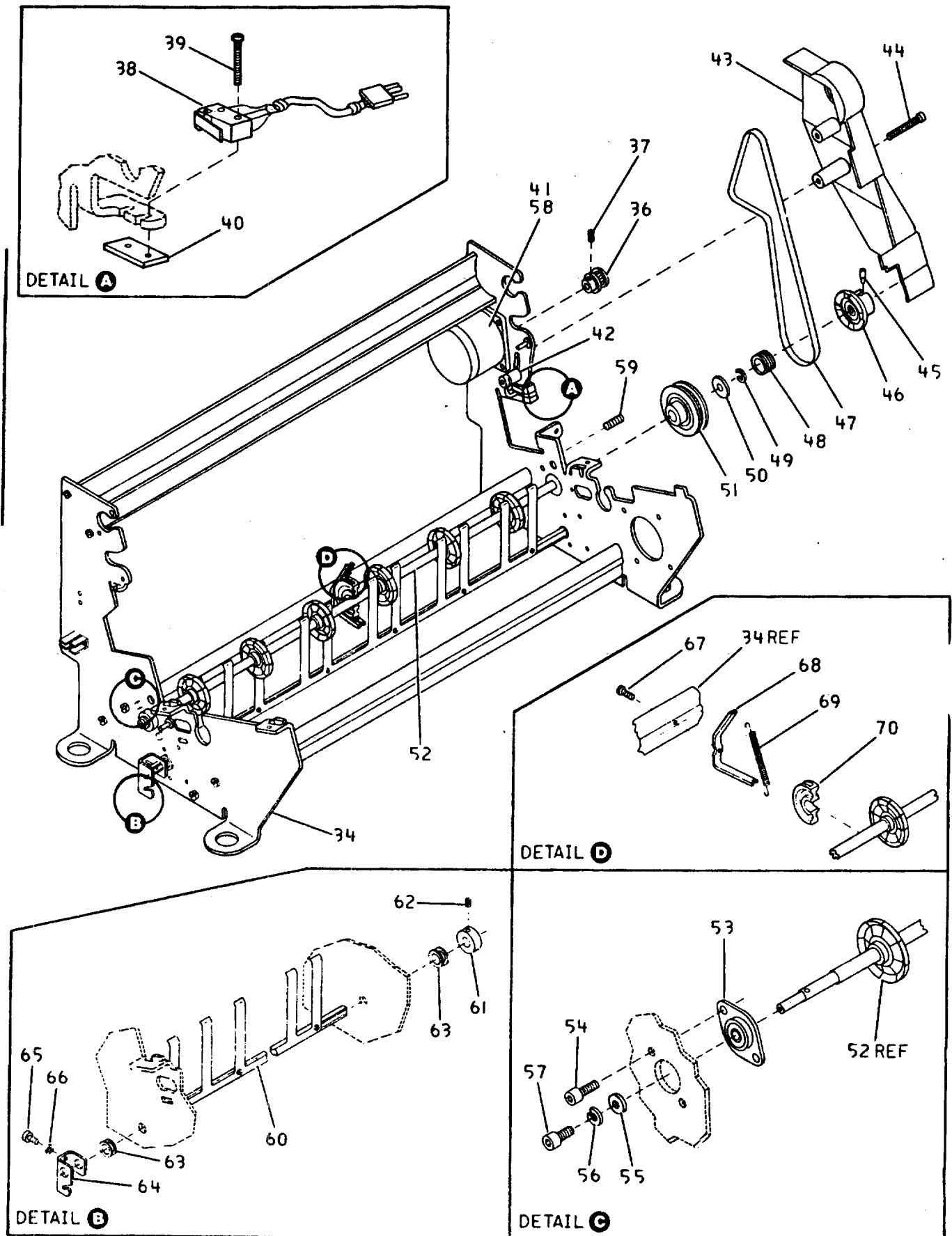


Figure 4. TRANSPORT ASSEMBLY (2 of 2)

FIGURE INDEX	PART NUMBER	UNITS	DESCRIPTION
4-34	6213054	NR	.FRAME ASSEMBLY
-36	8665442	1	.PULLEY
-37	6078589	1	.SET SCREW
-38	6213194	1	.PLATEN SWITCH ASSEMBLY
-39	1621004	2	.SCREW
-40	6078601	1	.NUT PLATE
-41	8665311	1	.MOTOR
-42	8665580	1	.IDLER ASSEMBLY
-43	6213048	1	.COVER
-44	1621192	4	.SCREW
-45	6350854	1	.PIN-AUTOLOAD
-46	8665550	1	.COUPLING-AUTOLOAD
-47	8665407	1	.BELT
-48	6350959	1	.SPRING-AUTOLOAD
-49	1126831	1	.RETAINING RING
-50	8665549	1	.WASHER-AUTOLOAD
-51	8665427	1	.DRIVE WHEEL ASSEMBLY
-52	62X1714	1	.SHAFT ASSEMBLY
-53	8665416	1	.BEARING PLATE ASSEMBLY
-54	1621508	2	.SCREW
-55	1622302	1	.WASHER
-56	1622316	1	.LOCKWASHER
-57	1621492	1	.SCREW
-58	1621192	3	.SCREW
-59	6078589	1	.SCREW
-60	6350907	1	.TENSION FINGER ASSEMBLY
-61	6240127	1	.SLEEVE
-62	6078589	1	.SCREW
-63	6275631	2	.BEARING
-64	6275625	1	.DRAG BAR LEVER
-65	1621495	1	.SCREW
-66	1622316	1	.LOCKWASHER
-67	1621172	1	.SCREW
-68	6350940	1	.BRACKET
-69	6350909	1	.SPRING
-70	6350910	1	.WHEEL

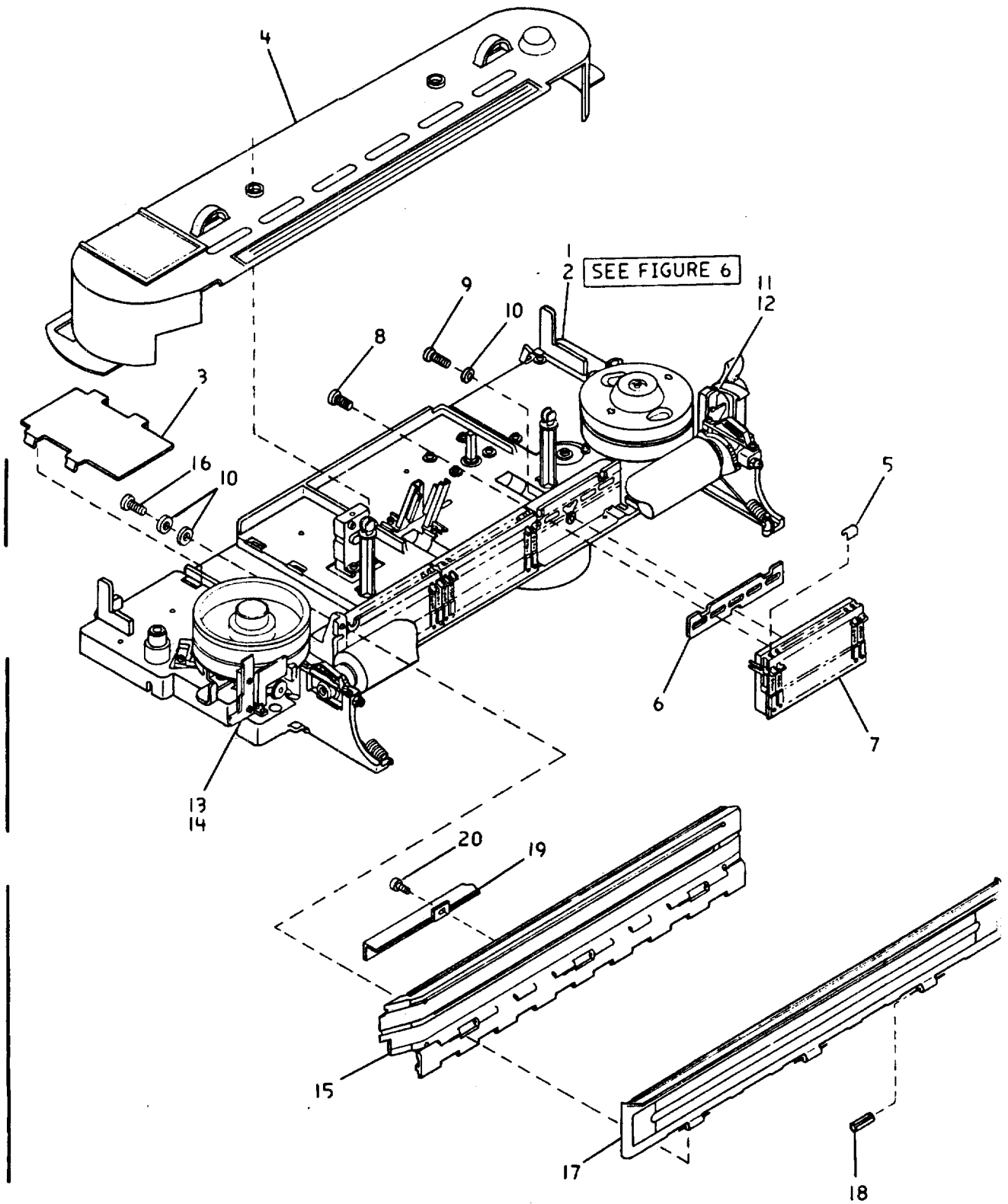


Figure 5. INTERMEDIATE PRINTER MECHANISM (IPM)

FIGURE INDEX	PART NUMBER	UNITS	DESCRIPTION
5-0	No PN	1	INTERMEDIATE PRINTER MECHANISM (IPM) FOR NEXT HIGHER ASM SEE FIGURE 3-2 FOR ILLUSTRATION SEE FIGURE 5
-1	62X1738	1	.MAIN CASTING ASSEMBLY (BARE CASTING WITH BEARINGS)
-2	8665302	1	.CASTING ASSEMBLY-LOW VOLTAGE, 60 HZ-100/110 V
-2	6240146	1	.CASTING ASSEMBLY-LOW VOLTAGE, 60 HZ-120/127 V
-2	8665303	1	.CASTING ASSEMBLY-HIGH VOLTAGE, 60 HZ-200/220 V
-2	8665304	1	.CASTING ASSEMBLY-LOW VOLTAGE, 50 HZ-100 V
-2	6240147	1	.CASTING ASSEMBLY-LOW VOLTAGE, 50 HZ-110 V
-2	8665305	1	.CASTING ASSEMBLY-HIGH VOLTAGE, 50 HZ-200 V
-2	6240148	1	.CASTING ASSEMBLY-HIGH VOLTAGE, 50 HZ-220/230/240 V FOR DETAIL BREAKDOWN SEE FIGURE 6
-3	6213126	1	.COVER
-4	6275541	1	.COVER ASSEMBLY
-5	6240157	2	.SHUNT
-6	8665299	3	.SEAL
-7	56X7370	3	.HAMMER ASSEMBLY
-8	1621510	6	.SCREW
-9	6240166	3	.SCREW
-10	1622304	3	.WASHER
-11	70X0309	1	.PLATE
-12	1621172	1	.SCREW
-13	6350913	1	.PLATE
-14	1621172	1	.SCREW
-15	62X1723	1	.GUIDE
-16	1621060	4	.SCREW
-17	62X1724	1	.PAPER SHIELD ASSEMBLY
-18	6275641	1	.BUSHING
-19	6275648	1	.COVER
-20	1621492	2	.SCREW

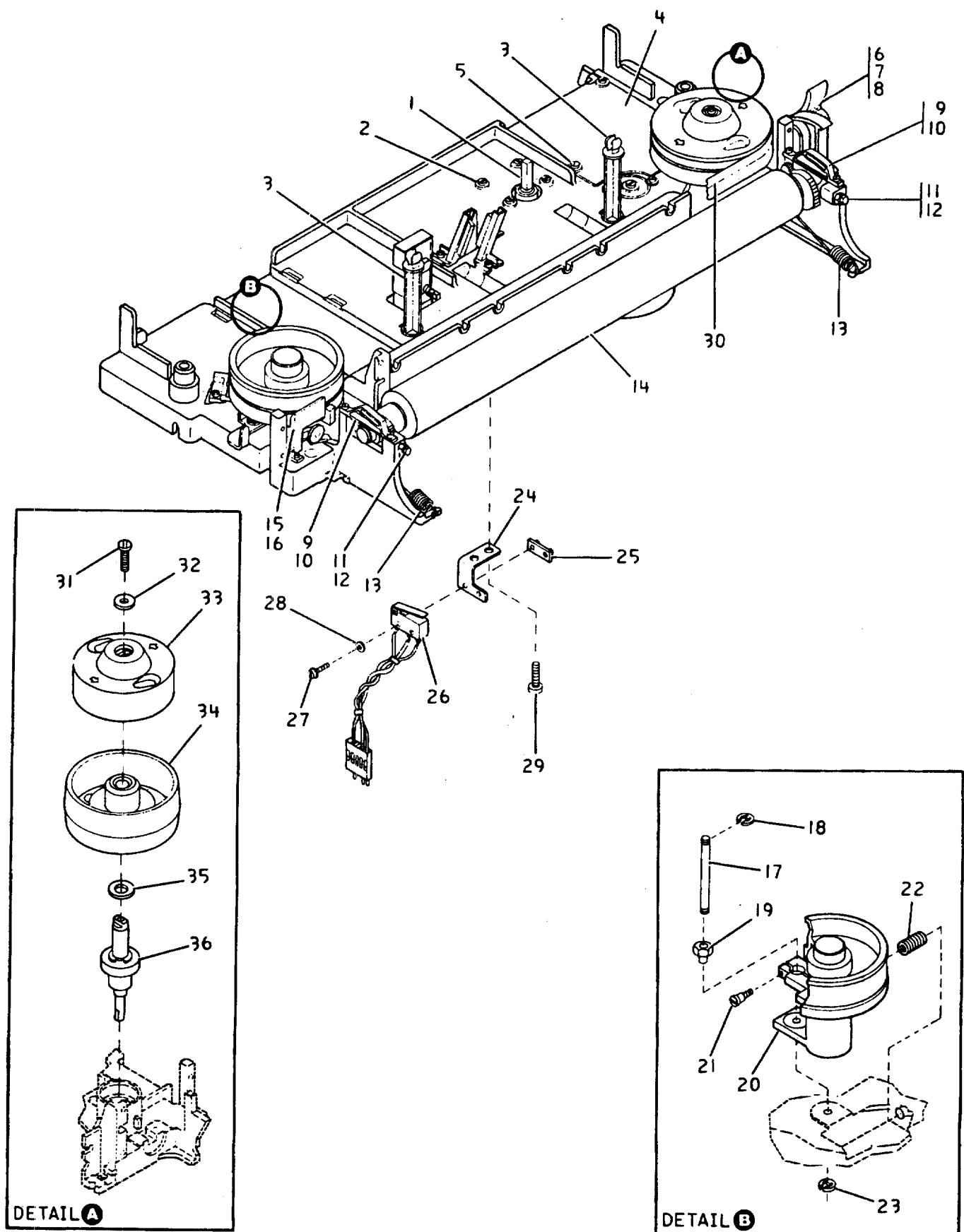


Figure 6. CASTING ASSEMBLY (1 of 3)

FIGURE INDEX	PART NUMBER	UNITS	DESCRIPTION
6-0	No PN	1	CASTING ASSEMBLY FOR NEXT HIGHER ASM SEE FIGURE 5-1 FOR ILLUSTRATION SEE FIGURE 6
-1	6275515	1	.MOTOR-RIBBON DRIVE LOW VOLTAGE, 50 HZ-100 V OR 60 HZ- 100 V/110 V
-1	6275517	1	.MOTOR-RIBBON DRIVE HIGH VOLTAGE, 50 HZ-200 V OR 60 HZ- 200 V/220 V
-1	6275516	1	.MOTOR RIBBON DRIVE HIGH VOLTAGE, 50 HZ-220 V/240 V
-1	6275518	1	.MOTOR RIBBON DRIVE LOW VOLTAGE, 50 HZ-110V OR 60 HZ- 120 V/127 V
-2	1621192	4	.SCREW
-3	6350824	2	.POST
-4	6213024	1	.COVER
-5	1621812	3	.SCREW
-6	6350931	1	.PLATEN HANDLE
-7	1621174	1	.SCREW
-8	1622401	1	.NUT
-9	6240114	2	.PLATE
-10	1621170	4	.SCREW
-11	1622403	2	.LOCKNUT
-12	6213043	2	.SCREW
-13	62X1708	2	.SPRING
-14	62X1711	1	.PLATEN ASSEMBLY
-15	6275542	1	.GUIDE
-16	1621852	2	.SCREW
-17	1794809	1	.SHAFT
-18	257982	1	.RETAINING RING
-19	1794808	1	.ECCENTRIC NUT
-20	6275549	1	.IDLER ASSEMBLY
-21	186929	1	.SCREW
-22	6240109	1	.SPRING
-23	257982	1	.RETAINING RING
-24	6213085	1	.BRACKET
-25	6078601	1	.NUT PLATE
-26	6213086	1	.SWITCH ASSEMBLY, PRINT BAND COVER
-27	1621004	2	.SCREW
-28	1622330	2	.WASHER
-29	1621850	2	.SCREW
-30	No PN	1	.BAND ASSEMBLY (CUSTOMER SUPPLIES ITEM)
-31	1621192	1	.SCREW
-32	1622304	1	.WASHER
-33	62X1693	1	.COVER ASSEMBLY-DRIVE ROTOR
-34	6328013	1	.ROTOR ASSEMBLY-DRIVE
-35	62X1695	1	.WASHER-ROTOR LIMIT
-36	6275552	1	.SHAFT ASSEMBLY-ROTOR

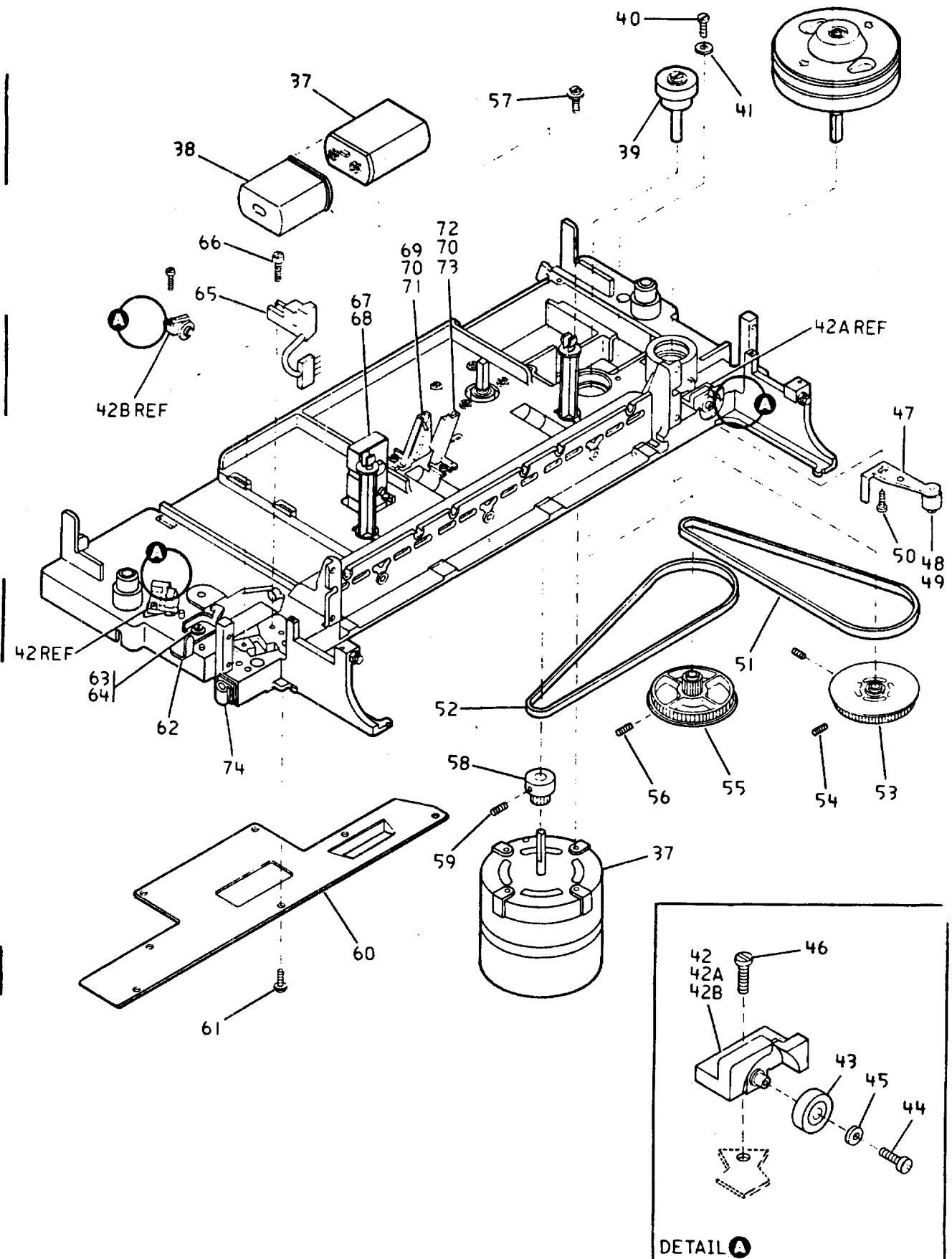


Figure 6. CASTING ASSEMBLY (2 of 3)

FIGURE INDEX	PART NUMBER	UNITS	DESCRIPTION
6-37	70X0301	1	.MOTOR/CAPACITOR BAND DRIVE- 100/110, 120/127 VAC, 60 HZ
-37	70X0302	1	.MOTOR/CAPACITOR BAND DRIVE- 200/220 VAC, 60 HZ
-37	70X0303	1	.MOTOR/CAPACITOR BAND DRIVE- 200 VAC, 50 HZ
-37	70X0305	1	.MOTOR/CAPACITOR BAND DRIVE- 220/240 VAC, 50 HZ
-37	70X0306	1	.MOTOR/CAPACITOR BAND DRIVE- SUB FOR P/N'S 70X0302 70X0304 AND 70X0305
-38	363001	1	.BOOT
-39	6213031	1	.SHAFT ASSEMBLY
-40	1621852	2	.SCREW
-41	5489032	2	.WASHER WASHER MUST HOLD BEARING IN PLACE
-42	6275531	1	.BRACKET ASSEMBLY-RIGHT HAND
-42A	6350933	1	.BRACKET ASSEMBLY-LEFT HAND
-42B	6350935	1	.BRACKET ASSEMBLY-RIGHT HAND REAR
-43	6350957	3	.BEARING ASSEMBLY
-44	1621001	3	.SCREW
-45	1622300	3	.WASHER
-46	1621191	3	.SCREW
-47	6213012	1	.LEVER ASSEMBLY
-48	6213013	1	.SLEEVE ASSEMBLY
-49	1621170	1	.SCREW
-50	1621851	2	.SCREW
-51	6213005	1	.BELT-RTR/1-ALL 50 HZ MACHINES
-51	6213004	1	.BELT-RTR/1-ALL 60 HZ MACHINES
-52	6213208	1	.BELT-MTR/1
-53	6212998	1	.PULLEY-ROTOR
-54	6078589	2	.SET SCREW
-55	6213002	1	.PULLEY-IDLER-ALL 50 HZ MACHINES
-55	6213000	1	.PULLEY-IDLER-ALL 60 HZ MACHINES
-56	6078589	1	.SET SCREW
-57	1621192	3	.SCREW
-58	6213210	1	.PULLEY
-59	6078589	1	.SET SCREW
-60	6213069	1	.PLATE-PLENUM
-61	1621850	7	.SCREW
-62	6350961	1	.LEVER
-63	1621852	1	.SCREW
-64	6240108	1	.SPACER
-65	6275519	1	.SENSOR
-66	6213206	1	.SCREW
-67	70X0341	1	.OILER ASSEMBLY
-68	1621852	2	.SCREW
-69	6275513	1	.HOLDER-BRUSH-LEFT HAND

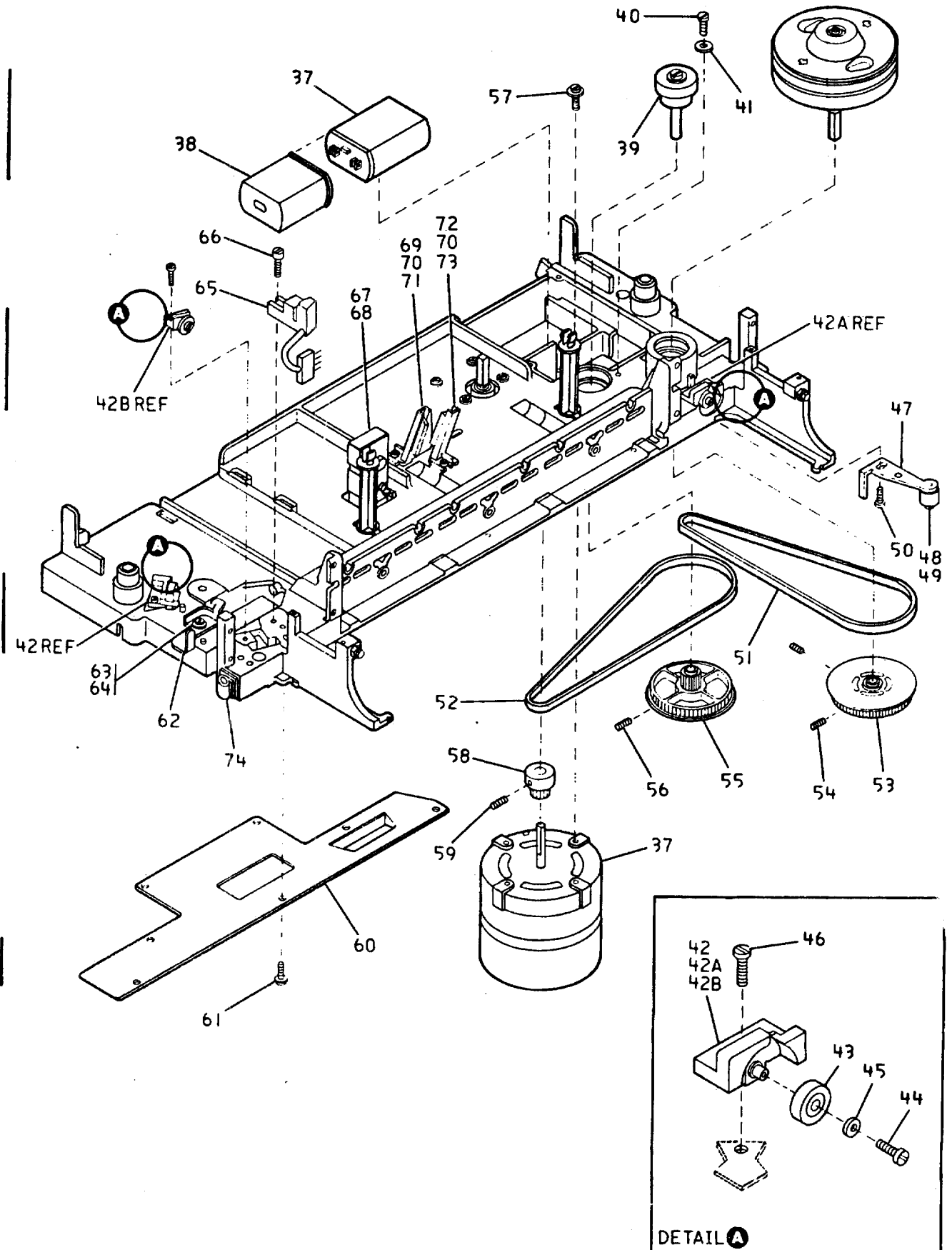


Figure 6. CASTING ASSEMBLY (3 of 3)

FIGURE INDEX	PART NUMBER	UNITS	DESCRIPTION
6-70	1621852	2	.SCREW
-71	6275525	1	.BRUSH-BAND
-72	6275512	1	.HOLDER-BRUSH-RIGHT HAND
-73	6275525	1	.BRUSH-BAND
-74	5681718	1	.CLAMP-SENSOR CABLE

This Page Intentionally Left Blank

CABLE ASSEMBLIES AND COMPONENT PARTS

FIGURE INDEX	PART NUMBER	UNITS	DESCRIPTION
7-A	6240133	1	CABLE ASSEMBLY-5 VOLT FOR COMPONENT PARTS SEE INDEX NOS. 5,7,8,10,11C
-B	6350874	1	CABLE ASSEMBLY-TWINAX INTERFACE FOR COMPONENT PARTS SEE INDEX NOS. 2,9,12A,13,14,23A,28
-C	8665257	1	CABLE ASSEMBLY-NDS INTERFACE FOR COMPONENT PARTS SEE INDEX NOS. 1,6,10A,12,13,15,16A,17,23,24 25,25A,26,27
I -D	70X0350	1	CABLE ASSEMBLY-OPERATORS PANEL FOR COMPONENT PARTS SEE INDEX NOS. 3,4,16B,18,19,20,21
-E	8665395	1	CABLE ASSEMBLY-AC DISTRIBUTION AND SWITCH
-F	62X1703	1	CABLE ASSEMBLY-HAMMERS FOR COMPONENT PARTS SEE INDEX NOS. 11,12A,13
-G	70X0327	1	CABLE ASSEMBLY-CONTROL,PAPER DRIVE FOR COMPONENT PARTS SEE INDEX NOS. 5,7,9,10,11A,11B,12A,13,16,19,22

Figure 7. CABLE ASSEMBLIES AND COMPONENT PARTS (1 of 3)

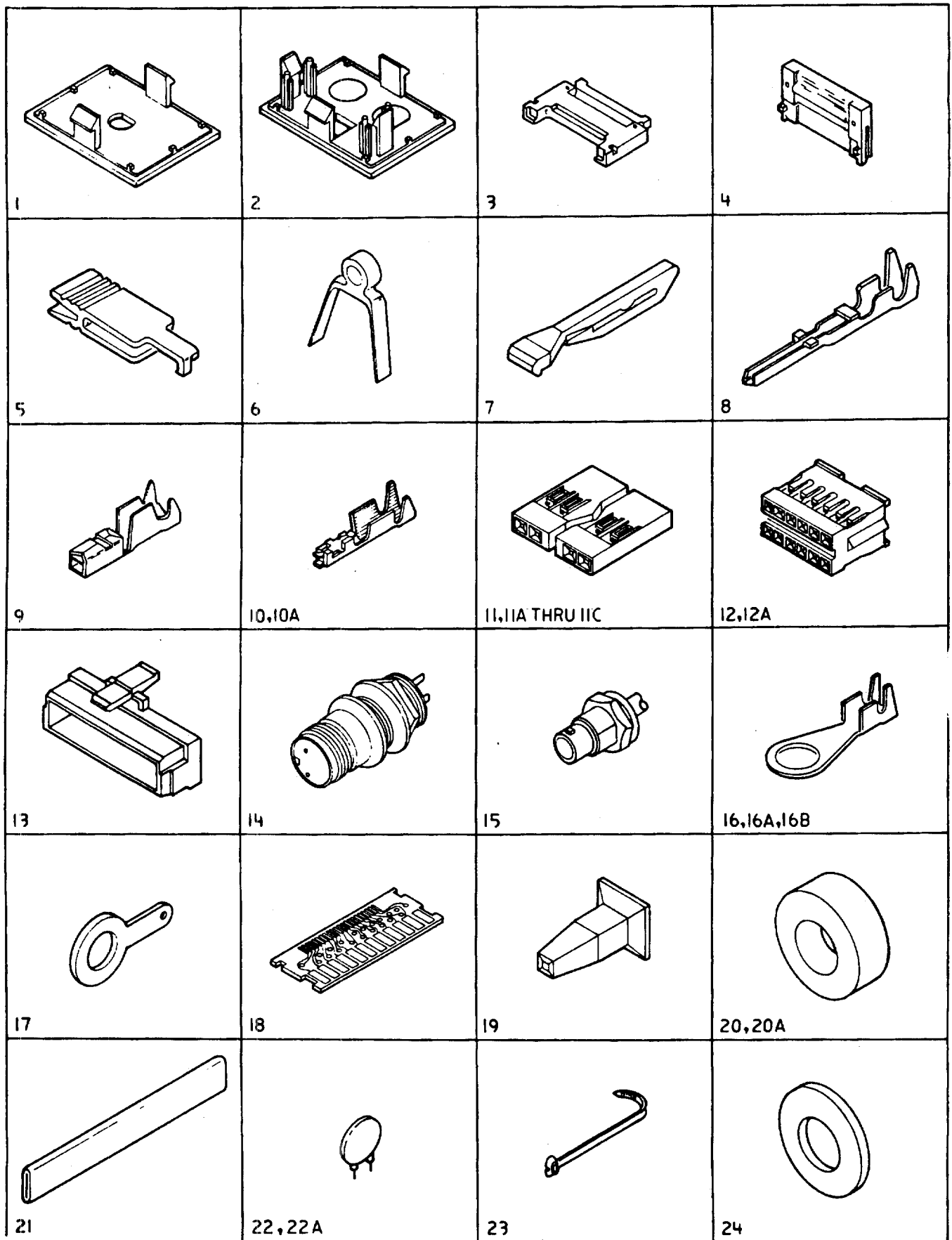


Figure 7. CABLE ASSEMBLIES AND COMPONENT PARTS (2 of 3)

FIGURE INDEX	PART NUMBER	UNITS	DESCRIPTION
7-1	8665512	AR	.RETAINER
-2	8665513	AR	.RETAINER
-3	813803	AR	.STRAIN RELIEF
-4	813804	AR	.STRAIN RELIEF
-5	1743055	AR	.CLIP
-6	6078585	AR	.STRAIN RELIEF
-7	5681086	AR	.RETAINER
-8	2731384	AR	.TERMINAL
-9	2637691	AR	.TERMINAL
-10	1661528	AR	.TERMINAL
-10A	2637683	AR	.TERMINAL
-11	1643864	AR	.HOUSING-32 POSITION
-11A	2731731	AR	.HOUSING
-11B	2732354	AR	.HOUSING
-11C	2637680	AR	.HOUSING
-12	2732337	AR	.HOUSING
-12A	2732338	AR	.HOUSING
-13	2732342	AR	.SHROUD
-14	7362179	AR	.RECEPTACLE
-15	5252661	AR	.CONNECTOR
-16	483676	AR	.TERMINAL-RING TONGUE
-16A	483686	AR	.TERMINAL-RING TONGUE
-16B	483687	AR	.TERMINAL-RING TONGUE
-17	2565189	AR	.TERMINAL-GND
-18	5863619	AR	.CARD ASSEMBLY
-19	2637689	AR	.KEY PLUG
-20	825468	AR	.CORE-FERRITE
-20A	1566831	AR	.CORE-FERRITE
-21	319026	AR	.SHIELD
-22	4406517	AR	.VARISTOR
-22A	5213736	AR	.CAPACITOR
-23	5420242	AR	.CABLE TIE
-24	1859384	AR	.WASHER


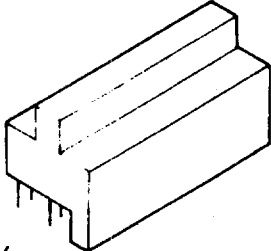
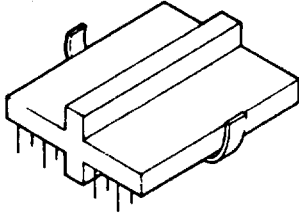
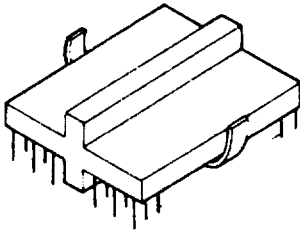
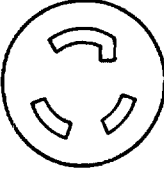
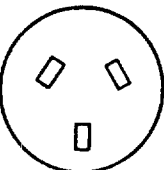
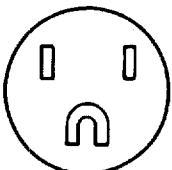
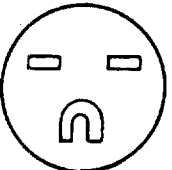
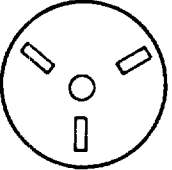
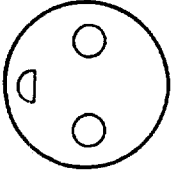
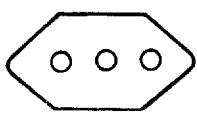
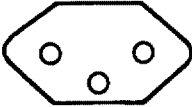
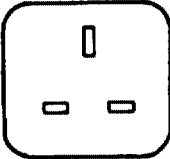
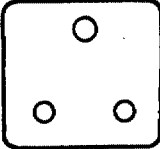
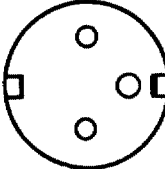
 25	 26	 27	 28

Figure 7. CABLE ASSEMBLIES AND COMPONENT PARTS (3 of 3)

FIGURE INDEX	PART NUMBER	UNITS	DESCRIPTION
1 7-25	6350872	AR	. JUMPER-MOD 2 ONLY
-26	4138510	AR	. TCC TOP CARD CONNECTOR-1 WIDE
-27	2766726	AR	. TCC TOP CARD CROSSOVER-2 WIDE
-28	4134863	AR	. TCC TOP CARD CROSSOVER-3 WIDE

LINECORD CHART

PLUG	PART NO.	VOLTAGE	USER
	6350806	125V LOCKING	CHICAGO
	6350808	125V LOCKING	USA, CANADA, NICARAGUA, VENEZUELA
	6350812	125V OR 250V	ARGENTINA, BRAZIL, COLOMBIA, PARAGUAY, TRINIDAD TOBAGO, URUGUAY
	6350813	125V OR 250V	AUSTRALIA, NEW ZEALAND, W. SAMOA
	6350807	125V	CHICAGO
	6350809	125V	USA, AFE
	6350814	250V	AFE
	6350815	250V	ISRAEL
	6350816	250V	DENMARK
	6350817	250V	CHILE, ETHIOPIA, ITALY

PLUG	PART NO.	VOLTAGE	USER
	6350818	250V	SWITZERLAND, LIECHTENSTEIN
	6350819	250V	AFE, EMEA
	6350820	250V	BURMA, BANGLADESH, HONG KONG, PAKISTAN, REP. OF S. AFRICA
	6350821	250V	EMEA

This page intentionally left blank.

NUMERICAL INDEX

PART NUMBER	FIGURE INDEX	PART NUMBER	FIGURE INDEX	PART NUMBER	FIGURE INDEX	PART NUMBER	FIGURE INDEX
188929	6-21	1822300	6-45	5681718	2-33	6240157	5-5
257982	6-18	1822302	4-55		6-74	6240166	5-8
	6-23	1822304	3-70	56X7348	2-11	6275512	6-72
319026	7-21		5-10	56X7357	3-16	6275513	6-69
363001	3-58		6-32	56X7361	3-28	6275515	6-1
	6-38	1822306	2-18	56X7370	5-7	6275516	6-1
483676	7-16		4-29	5863619	7-18	6275517	6-1
483686	7-18 A	1822316	4-56	6078585	7-6	6275518	6-1
483687	7-16B		4-66	6078589	4-8	6275519	6-85
518611	3-21	1822318	3-18		4-20	6275521	4-13
813803	7-3	1822330	6-28		4-37	6275525	6-71
813804	7-4	1822344	4-32		4-59		6-73
825468	7-20	1822346	3-19		4-62	6275531	6-42
843574	3-25		3-51		6-54	6275541	5-4
843576	3-26		3-62		6-56	6275542	6-15
1092125	2-32		3-71		6-59	6275548	6-20
1126631	2-15	1622401	3-57	6078590	4-8	6275552	6-36
	4-49		4-33	6078601	4-40	6275567	2-6
	4-2		6-8		6-25	6275609	3-68 A
1126833	4-2	1622403	3-61	6126642	3-12	6275625	4-64
1566831	7-20 A		6-11	6126643	3-12	6275626	4-26
1621001	6-44		2-17	6212998	6-53	6275627	4-22
1621004	4-39	1622454	2-8	6213000	6-55	6275628	4-24
	6-27	1622855	2-10	6213002	6-55	6275629	4-28
1621080	5-16		3-13	6213004	6-51	6275631	4-63
1621170	6-10	1622856	3-20	6213005	6-51	6275633	4-23
	6-49		1-5	6213012	6-47	6275634	4-25
1621171	4-31	1622880	1-13	6213013	6-48	6275641	5-18
1621172	4-67		3-54	6213024	6-4	6275643	3-68
	5-12		3-66	6213031	6-39	6275648	5-19
	5-14		3-64	6213043	6-12	62X1682	4-1
1621174	6-7	1622861	7-11	6213048	4-43	62X1684	2-5
1621190	3-68C	1643864	7-10	6213054	4-34	62X1693	6-33
	3-69	1661528	7-5	6213057	4-10	62X1695	6-35
1621191	3-3	1743055	3-47	6213089	6-80	62X1697	1-1
	3-17	1743141	3-47	6213073	2-12	62X1700	3-79
	3-46	1743142	3-47	6213085	6-24	62X1703	7-F
	3-50	1743143	3-47	6213086	6-26	62X1705	2-19
	4-14	1743144	3-47	6213089	3-68B	62X1708	6-13
	6-46	1794555	1-2	6213090	3-68D	62X1711	6-14
1621192	3-63	1794808	6-19	6213091	2-4	62X1714	4-52
	4-44	1794809	6-17	6213092	2-9	62X1723	5-15
	4-58	1859384	7-24	6213101	1-11	62X1724	5-17
	6-2	1989899	3-7	6213111	3-26B	62X1734	2-3 A
	6-31	2513269	2-3	6213118	3-53	62X1738	5-1
	6-57	2565189	7-17	6213126	5-3	62X1748	3-60
1621193	3-40	2637680	7-11C	6213148	1-9	62X1749	1-4
1621197	4-18	2637683	7-10 A	6213149	1-8	62X1751	2-19
	4-27	2637688	7-19	6213161	3-15	62X1754	2-3B
1621231	3-31	2637691	7-9	6213162	3-65	62X1759	3-28B
1621236	2-3C	2731384	7-8	6213166	3-56	62X1775	1-6
1621492	4-11	2731731	7-11 A	6213194	4-38	62X1776	3-11
	4-57	2732337	7-12	6213206	6-66	62X1777	3-11
	5-20	2732338	7-12 A	6213208	6-52	62X1779	3-52
1621495	4-65	2732342	7-13	6213210	6-58	62X1780	3-52
1621508	4-54	2732354	7-11B	6240108	6-64	6328013	6-34
1621510	5-8	2766726	7-27	6240109	6-22	6341227	3-5
1621812	6-5	4134863	7-28	6240114	6-9	6350771	4-15
1621850	6-29	4138510	7-26	6240127	4-5	6350824	6-3
	6-61	4408517	7-22		4-61	6350846	3-29
1621851	6-50	5213736	7-22 A	8240133	7-A	6350849	3-14
1621852	1-3	5252661	7-15	8240136	3-32	6350852	3-72
	1-10	5252806	3-59	8240143	3-35	6350853	3-72
	6-16	5252868	3-59	8240144	3-34	6350854	4-45
	6-40	5420242	7-23	8240146	5-2	6350872	7-25
	6-63	5489032	6-41	8240147	5-2	6350873	3-22
	6-68	5492542	4-30	8240148	5-2	6350874	3-75
	6-70	5681086	7-7				

PART NUMBER	FIGURE INDEX	PART NUMBER	FIGURE INDEX	PART NUMBER	FIGURE INDEX	PART NUMBER	FIGURE INDEX
6350874	7-8	8665460	3-8				
6350878	4-17	8665474	2-1 A				
6350879	4-12	8665480	2-13				
6350889	1-7	8665508	2-7				
6350907	4-60	8665512	7-1				
6350909	4-69	8665513	7-2				
6350910	4-70	8665520	3-1				
6350911	4-21		4-0				
6350913	5-13	8665547	4-3				
6350922	2-20	8665549	4-50				
6350928	2-22	8665550	4-46				
6350931	6-6	8665554	2-18				
6350933	6-42 A	8665555	2-14				
6350935	6-42B	8665556	2-2				
6350936	2-21	8665580	4-42				
6350940	4-68	8665619	3-39				
6350942	4-7	8665620	3-36				
6350943	3-10	8665640	3-55				
6350944	3-10	8665641	3-37				
6350948	3-4	8665642	3-38				
	3-41	8678382	3-8				
6350952	3-33	8678383	3-6				
6350955	3-48						
6350956	3-49						
6350957	6-43						
6350959	4-48						
6350961	6-62						
6842984	3-26 A						
70X0301	6-37						
70X0302	6-37						
70X0303	6-37						
70X0305	6-37						
70X0306	6-37						
70X0308	4-8						
70X0309	5-11						
70X0310	3-30						
70X0318	4-4						
70X0322	2-34						
70X0323	2-30						
70X0324	2-1						
70X0325	2-1						
70X0326	3-67						
70X0327	7-6						
70X0337	1-0						
70X0338	3-27						
70X0341	6-67						
70X0350	7-0						
70X0351	2-32						
70X0361	3-60						
70X0364	4-1						
7362179	7-14						
7362188	3-76						
8665257	3-74						
	7-C						
8665299	5-6						
8665302	5-2						
8665303	5-2						
8665304	5-2						
8665305	5-2						
8665311	4-41						
8665386	3-44						
8665395	7-E						
8665398	3-45						
8665399	3-42						
8665407	4-47						
8665416	4-53						
8665419	4-16						
8665427	4-51						
8665437	4-19						
8665442	4-36						

IBM Maintenance Library
IBM 4234 Printer
Parts Catalog

READER'S
COMMENT
FORM

Order No. SC31-3015-2

This manual is part of a library that serves as a reference source for systems analysts, programmers, and operators of IBM systems. You may use this form to communicate your comments about this publication, its organization, or subject matter, with the understanding that IBM may use or distribute whatever information you supply in any way it believes appropriate without incurring any obligation to you.

Your comments will be sent to the author's department for whatever review and action, if any, are deemed appropriate. Comments may be written in your own language; English is not required.

Note: Copies of IBM publications are not stocked at the location to which this form is addressed. Please direct any requests for copies of publications, or for assistance in using your IBM system, to your IBM representative or to the IBM branch office serving your locality.
Possible topics for comment are:

Clarity Accuracy Completeness Organization Coding Retrieval Legibility

If you wish a reply, give your name, company, mailing address, and date:

What is your occupation? _____

Number of latest Newsletter associated with this publication: _____

Thank you for your cooperation. No postage stamp necessary if mailed in the U.S.A.
(Elsewhere, an IBM office or representative will be happy to forward your comments or you may mail directly to the address in the Edition Notice on the back of the title page.)

Reader's Comment Form

Fold and Tape

Please Do Not Staple

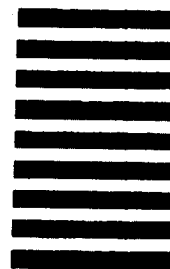
Fold and Tape



NO
POSTAGE
NECESSARY
IF MAILED
IN THE
UNITED
STATES

BUSINESS REPLY MAIL

FIRST CLASS PERMIT NO. 40 ARMONK, N.Y.



POSTAGE WILL BE PAID BY ADDRESSEE:

International Business Machines Corporation
Department 78C
1001 W.T. Harris Boulevard West
Charlotte, NC, 28257 USA

Fold and Tape

Please Do Not Staple

Fold and Tape



1

2

3

4

5

6

7

8

9

SC31-3015-2

IBM

Printer Parts Catalog Printed in U.S.A. SC31-3015-2

SC31-3015-02

