

Firmware Update

The printer has the basic controller Firmware and the font generator on FLASH device.

This allows an easily update of the Firmware through the USB or parallel interfaces.

On the Main Board used as spare part, the preloaded Firmware has to be intended just as a predisposition allowing to load the specific firmware.

REMARK: before starts with the Flash FW downloading procedure, be sure the printer is in a safety condition, because any loss of power during the procedure may create an unrecoverable error in the flash device.

- Firmware Update through parallel interface (DOS prompt)

The Firmware updating operation through the parallel interface can be done under DOS (even a Windows DOS) environment.

The default Parallel interface is LPT1.

The firmware of the printer is a file with extension .img (i.e.: *firmware.img*)

It contains the files for Basic Code + Characters Generator

Updating steps

1. Create a sub-folder and position on it.
 2. Copy into this sub-folder the *firmware.img* file.
 3. Connect the printer to a PC on the parallel port LPT1.
 4. Open the cover.
 5. Push and hold the key Station 1 while Power-on the printer.
- All the leds on the panel are contemporary blinking, which means waiting for a new firmware.
If the LCD display O.P. is installed the message below will appear:

WAITING CODE

Prompt on the P.C. following syntax:

C:>\ COPY *firmware.img* LPT1:/b

6. During the downloading the light leds configuration identifies various phases. (Image receiving, image

decoding, delete and write of new code in flash, updating of the boot).

With the LCD display the following messages will be displayed:

RECEIVING CODE

ERASING SECT.xx

WRITING SECT.xx

CODE OK

When the download is ended with success, the printer will automatically reboot.

7. Print the Self test to assure the new code has been correctly loaded.

Firmware Update through USB interface using SP40Setup Utility

Connect a standard USB cable to the default USB port of a PC and to the printer USB port.

- On the printer open the main cover, then press and hold down the “S1” key. Power On the printer without releasing the key
- All the leds on the panel are contemporary blinking, which means waiting for a new firmware.
If the LCD display O.P. is installed the message below will appear:

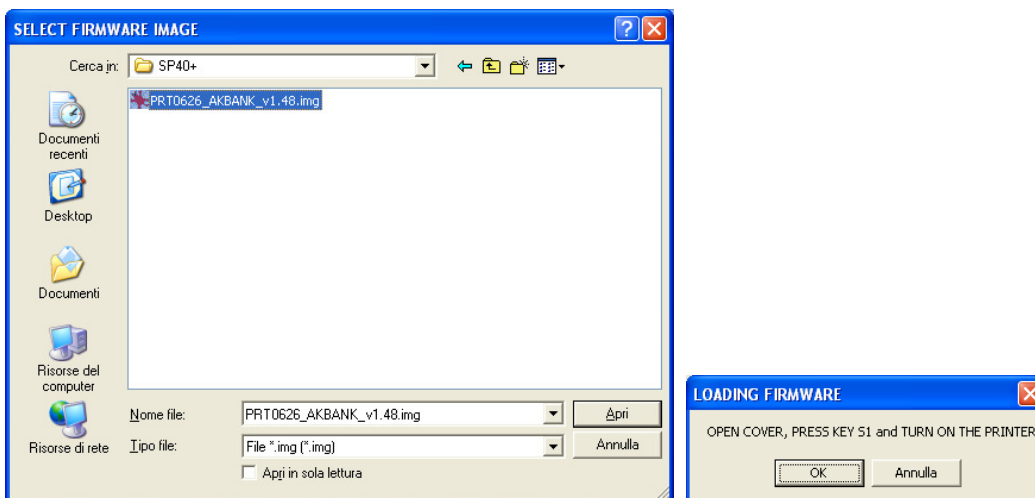
WAITING CODE

- If CDC driver is not installed into PC, driver are automatically requested:
E:\source\drivers\Compuprint SP40_SP40Plus_SP40PlusT\CDC-Driver_WinXp
-
- Run the utility: **SP40Plus_Remote_Setup_Tool.exe**
if not installed proceed to install the program **SP40Setup V2.0.16**:
E:\source\tools\remote_panel_new\Setup.exe



In the top window the selection of the available interfaces is displayed. Choose the USB(CdC) interface and consequently the available actions for it will be highlighted on the below selection buttons.

Click on **Load FW**, this mask will appear. Follow the path and choose the name of the .img file to be load through the selected interface.



When select the ***firmware.img*** file and click on open key, an attention mask will appear to advise to power-on the printer in the special mode (open the cover and press ST1 key at power on).

All the leds on the panel are contemporary blinking, which means waiting for a new firmware.
If the LCD display O.P. is installed the message below will appear:

WAITING CODE

During the downloading the light leds configuration identifies various phases. (Image receiving, Image decoding, delete and write of new code in flash, updating of the boot).

With the LCD display the following messages will be displayed:

RECEIVING CODE

ERASING SECT.xx

WRITING SECT.xx

CODE OK

When the download is ended with success, the printer will automatically reboot.

Print the Self test to assure the new code has been correctly loaded.